



First Edition December 1997  
692739-001

Technical Support:  
1-916-377-7000  
http://support.intel.com  
Hillsboro OR 97124-6497  
5200 NE Elam Young Pkwy.  
Intel Corporation

- Hub
- Power Adapter
- Quick Installation Poster
- Networking Basics
- Cablekeeper Ring

YOUR PACKAGE CONTAINS:

Intel Corporation assumes no responsibility for errors or omissions in this installation guide, nor does Intel make any commitment to update the information contained herein.  
Intel Corporation  
5200 NE Elam Young Parkway,  
Hillsboro OR 97124-6497  
Copyright © 1997, Intel Corporation. All rights reserved.  
Intel Corporation  
5200 NE Elam Young Parkway,  
Hillsboro OR 97124-6497  
Limited Lifetime Warranty

IEEE 802.3  
CE Class A  
Class A Part 15 FCC Rules

# Quick Installation Poster

## Intel InBusiness™ 5- and 8-Port Hubs

## Start By Learning About Intel Hubs

The Intel InBusiness™ 5-Port Hub and 8-Port Hub connect computers and other devices into small networks or workgroups, making it possible share files, programs, printers, fax lines, modems, and even Internet access. The hub is the central connecting device for a small network or workgroup.

When the time comes to expand or connect to another workgroup, you can be assured that your Intel InBusiness hub will not become obsolete. A simple connection to another hub and you instantly have two communicating workgroups. Be sure to follow “cascading” directions as described.

These hubs are plug and play. No software is required.

## Before You Begin...

1. Each computer to be connected to the hub must have a 10BASE-T Ethernet network interface card. The card should contain an RJ-45 connection that will be used to connect the card to your hub.
2. Did the computer manufacturer pre-install the network interface card software? If so, open the poster to begin making connections now.
3. If not, complete the installation of the card and software according to the directions of the supplier.



## A Special Offer for Registering Your Hub

Registering your Intel InBusiness hub authorizes you to receive *free* installation assistance for 90 days. Locate the Warranty Registration card in the center of the *Networking Basics* book. Fill in the requested information and mail the postage-free card today. More information on technical service and the limited lifetime warranty is included in *Networking Basics*.

## Choose the Right Cable

Port Type	Cable Type	Nodes (computers, servers, etc.)	Networking Equipment (switches, hubs, bridges, etc.)
Numbered Ports	Category 3 or 5 10BASE-T	Network Standard	N/A
Out to Hub/X Port	Category 3 or 5 10BASE-T	N/A	Network Standard
Coax (BNC)	RG-58/U Use 50 ohm terminators	N/A	RG-58/U (backbone)

If you are unsure or need more information about what type of cable to use, see “Quality Cable Standards” in the *Networking Basics* book included with your hub. Answers to most questions about cabling, hubs and other networking products are explained in the book.

## Have a Question?

*This list will help resolve most common problems encountered following installation.*

- ✓ Check power connections and power switches. Make sure all connections are secure and devices are on and functioning. All devices must be powered on for link status lights to be lit on the hub.
- ✓ 10BASE-T connections should be securely connected.
- ✓ Make certain you use the correct cable quality; Category 3 or 5 for 10Mbps connections.
- ✓ If all above conditions are met and you still do not have a link status light, replace the cable to the unlit port to determine if the cable is the source of the problem.
- ✓ Cable lengths and quality must be within standards. Keeping cable lengths short as possible improves network performance.
- ✓ When cascading hubs together, follow examples exactly.

Review *Networking Basics* for tips on keeping your network operating at peak performance.

## Need More Help?

A trained technical specialist will take your call Monday through Friday between 7 a.m. and 8 p.m., and Saturday between 7 a.m. and 3 p.m., Pacific time. Locate the serial number on your product for faster service. Call 1-916-377-7000.

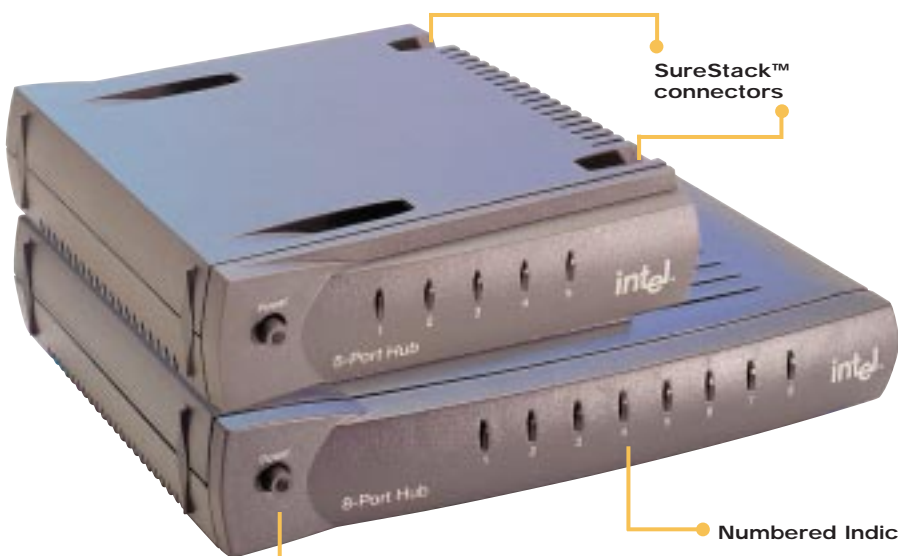
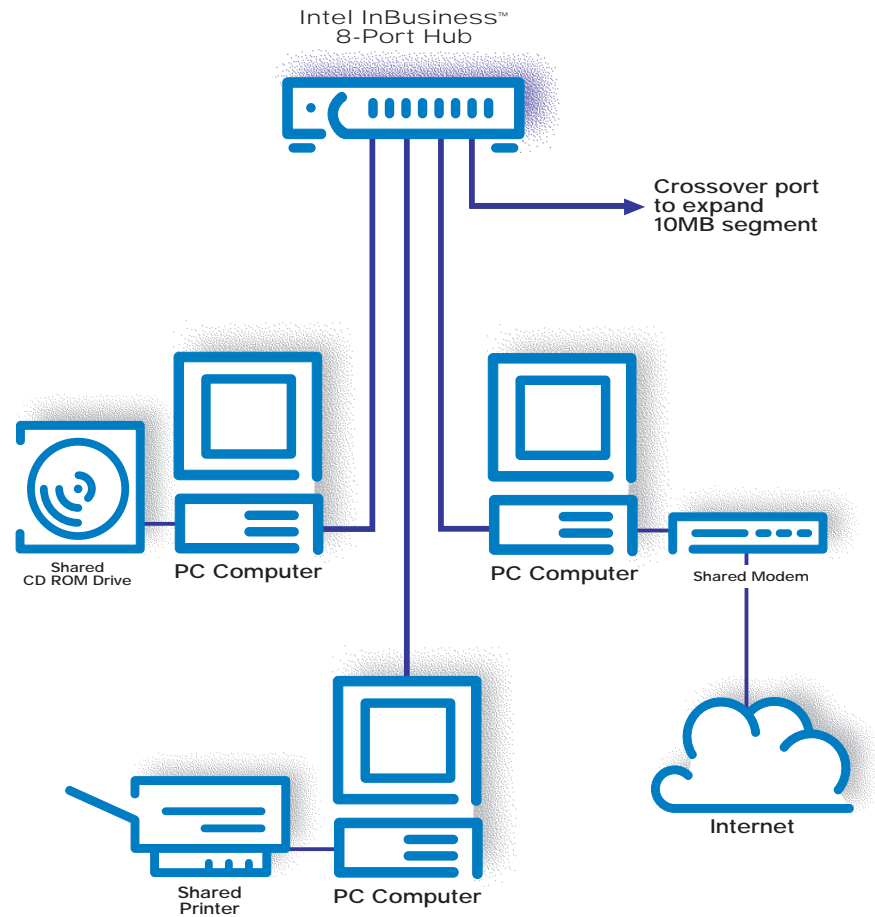
Now, open your poster for easy-to-follow setup directions.

# 3 Easy Steps

Networking has Never Been Easier!

- 1 Connect the power adapter to the hub and to the power source.
- 2 Make connections between devices and the hub using 10BASE-T cable. Start with port 1.
  - Use the correct cable type and quality for each connection. Review "Choose the Right Cable" for reference.
  - Ready to expand, add more nodes, or connect to another workgroup? Review "Cascading" below for easy instructions on using the "Out to Hub/X" port.
- 3 Turn on the hub and all connected devices. The hub's front panel light for each connected device should glow.
 

*Basic installation is now complete!*

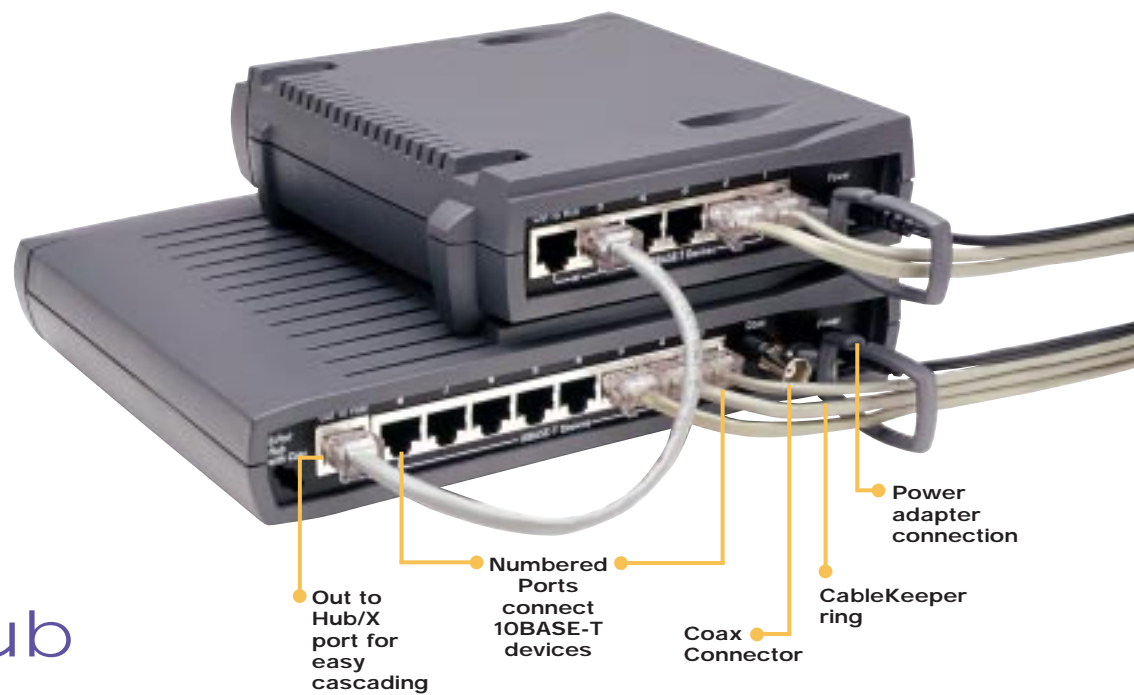


On/Off Power button with green On indicator light

Numbered Indicator Lights  
 • Solid green indicates good connection  
 • Flashing green indicates send/receive activity

## Making Coax Connections

Make connections to the "coax" port using RG-58/U network coax cabling and a "T" connector. Remember, open ends of your coax cable must be terminated using a 50 ohm terminator.



Out to Hub/X port for easy cascading

Numbered Ports connect 10BASE-T devices

Coax Connector

Power adapter connection  
 CableKeeper ring

## Cascading-Connecting Another Hub

Cascading is simple with Intel InBusiness products using the "Out to Hub/X" port.

- Hub-to-hub connections are made by connecting the "Out to Hub/X" port of the hub to any standard port of the other device using standard 10BASE-T cable. Follow the pictured example closely. The coax connector may also be used to connect to a backbone.

**Note:** When using the "Out to Hub/X" port, the adjoining port (port 5 or port 8) cannot be used for normal node connections.

**Important!** When expanding beyond two linked hubs, you must connect to a switch or bridge.

## Place Hub in a Central Location

- ✓ Snap the CableKeeper ring into its slot and rotate to a vertical position. Draw the cables through the ring.
- ✓ Stack your Intel InBusiness products vertically or horizontally using the unique SureStack™ design. Press together firmly to ensure a good connection. When required, mount on a wall using the enclosed template as a guide. (Locate the template at the center of the *Networking Basics* book.)



## Intel InBusiness™ Products

Intel InBusiness networking products provide everything that small offices need to share resources and increase productivity. Designed specifically for small networks, these products include hubs, switches, bridges, and the Internet Station, perfect for sharing Internet access over a small network.