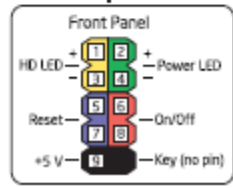
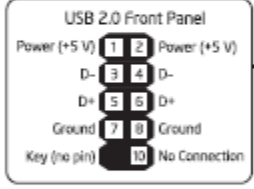
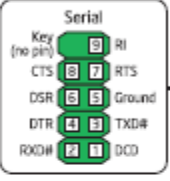
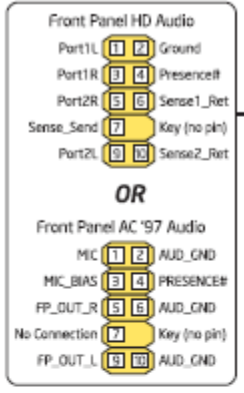


Attach this label near the back panel connectors.

Attach this label to the inside surface of the chassis.

**CAUTION**  
 Risk of explosion if the battery is replaced with an incorrect type. Batteries should be recycled where possible. Disposal of used batteries must be in accordance with local environmental regulations.

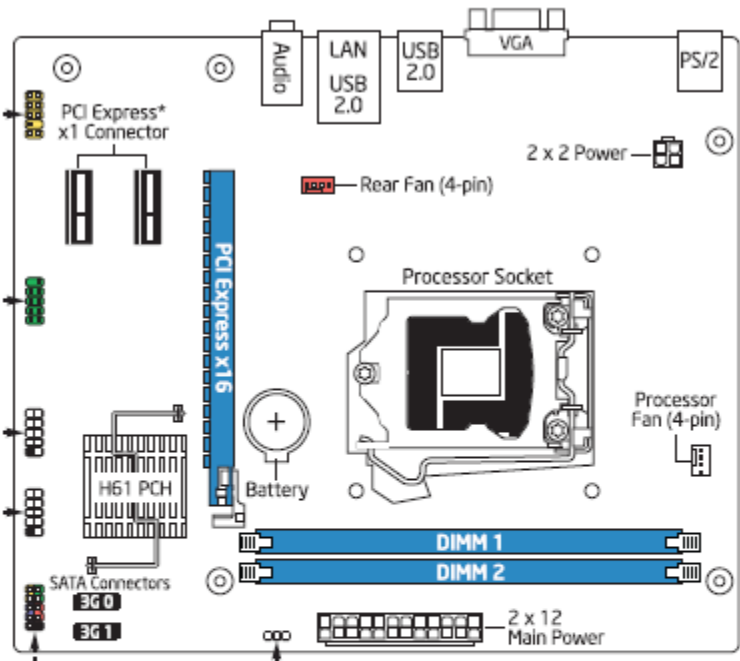


**BIOS Configuration Jumper Block**

|           |               |
|-----------|---------------|
| 1-2       | Normal        |
| 2-3       | Configuration |
| No jumper | Recovery      |



DH61HO



\*Other names and brands may be claimed as the property of others. Copyright © 2012, Intel Corporation. All rights reserved.