

Contents

Before You Begin.....	2
Requirements	2
Resources	2
Determine the Software Version Installed on the IHC Server	2
Create the Answer File	3
If the Windows SBS 2008 Source Server is on a 3.5 IHC Server	3
If the Windows SBS 2008 Source Server is on a 3.6 IHC Server	3
Download and Install Windows SBS 2011	4
Upload SBSAnswer and IHC Migration Files to the Destination Server	4
Download the Windows SBS 2011 Migration Files	4
Upload the Windows SBS 2011 Migration Files	5
Windows SBS 2011 Migration	6
Start Migration.....	6
Perform Post Migration Validation.....	7
Troubleshooting	9
Windows SBS 2011 Fails to Download	9
Migration Fails to Detect the Windows SBS 2008 Source Server Name	9
Migration Fails to Log into the Source Server Domain	9

This document provides information on how to migrate the Windows Small Business Server* (SBS) 2008 appliance to a Windows Small Business Server* (SBS) 2011 appliance on the Intel® Hybrid Cloud (IHC) server version 3.5 or 3.6. This document also describes how to activate ActivAeon* agents on the Windows SBS 2011 appliance after you finish the migration.

Before You Begin

Requirements

Please verify or do the following before beginning the migration process:

- Intel® Hybrid Cloud server manager is installed on the management computer.
- Windows SBS 2011 ISO is available.
- Verify that the IHC server has software version 3.5 or 3.6 is installed.
- You have the Windows SBS 2008 administrator username and password.
- Windows SBS 2008 appliance needs to be started and connected to the same network as Windows SBS 2011.

Resources

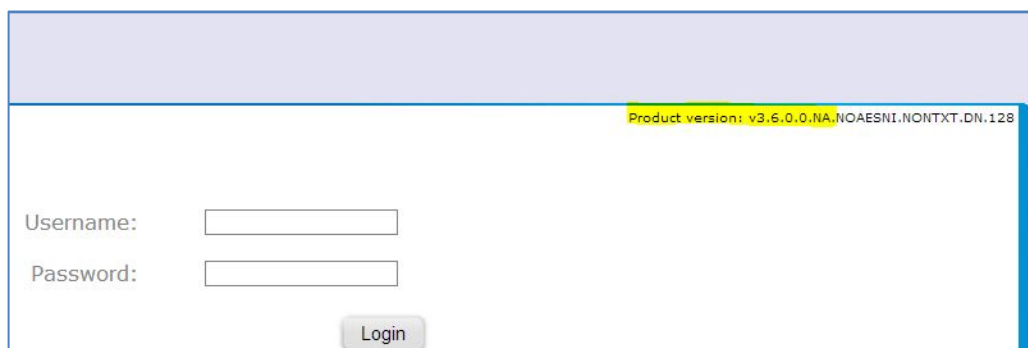
The following resources are available for help with the migration process.

- For migration tips, see [SBS 2011 Standard Migrations – Keys to Success](http://blogs.technet.com/b/sbs/archive/2011/07/01/sbs-2011-standard-migrations-keys-to-success.aspx) (<http://blogs.technet.com/b/sbs/archive/2011/07/01/sbs-2011-standard-migrations-keys-to-success.aspx>).
- For help with creating the Answer File, see [Migration to Windows Small Business Server 2011 Standard](http://technet.microsoft.com/en-us/library/gg490796.aspx) (<http://technet.microsoft.com/en-us/library/gg490796.aspx>).
- Windows SBS 2011 ISO can be downloaded from <http://technet.microsoft.com/en-us/evalcenter/gg492833.aspx>.
- Virtual CloneDrive can be downloaded from <http://www.slysoft.com/en/virtual-clonedrive.html>.

Determine the Software Version Installed on the IHC Server

You will need to determine whether the IHC server software version is 3.5 or 3.6.

1. From the management PC, launch a Web browser.
2. Assure the IHC server is on the same network as the management PC, go to **https://<IHC server IP>:64440/login**. The software version should be displayed on the login screen, as shown in the highlighted area of the following example.



Create the Answer File

For help with this section, see the reference listed in the [Resources](#) section of this guide.

1. Verify that the source server has a static IP.
2. Insert the Windows SBS 2011 Standard DVD or mount Windows SBS 2011 ISO to the Windows SBS 2008 source server.

NOTE: If the Windows SBS 2011 Standard DVD is not available, you can download it from the link in the [Resources](#) section of this guide.

If you do not have a tool for mounting the ISO, Virtual CloneDrive is a good tool to use. A download link is also provided in the Resources section.

3. Select the **Install Migration Preparation Tool** option. Install all updates required so the migration tool can be installed.
4. When the migration preparation tool installation completes, select its shortcut on the desktop.
5. Follow the migration preparation wizard. Continue until all detected issues have been fixed and updated.
6. Select the **Create an answer file** option when the source server is prepared successfully. The answer file dialogue box opens.
7. Select the **Migrate from an existing server** option unless it is a new installation.
8. Uncheck the **Run unattended** checkbox.
9. Select the time zone to match the source server time zone.
10. Enter information in the required fields in the answer file dialog box.
11. Uncheck the **DHCP** check box if DHCP is not running on the Windows SBS 2008 source server.
12. Save the SBSAnswer file to a thumb drive or a folder where it can be accessed later.
13. Important! Restart the Windows SBS 2008 source server.

If the Windows SBS 2008 Source Server is on a 3.5 IHC Server

Use these instructions when the Windows SBS 2008 source server is installed as an IHC appliance and the IHC server has software version 3.5 installed.

1. Log in to the source server from IHC server manager.
2. Log in to the Windows SBS 2008 VM.
3. Launch the command line.
4. Type `cd "C:\Program Files (x86)\activAeon\activAeon XA"`.
5. Type `"xaConfigure.exe /unmanage"` and press **Enter**.
6. Important! Restart the Windows SBS 2008 source server.

If the Windows SBS 2008 Source Server is on a 3.6 IHC Server

Use these instructions when the Windows SBS 2008 source server is installed as an IHC appliance and the IHC server has software version 3.6 installed.

1. Log in to the source server from IHC server manager.
2. Log in to the Windows SBS 2008 VM.

3. Launch the command line.
4. Type `cd "C:\Program Files (x86)\activAeon\activAeon XA\activAeon XA\Intel_Agent"` and press **Enter**.
5. Type `"xaIntelManageAgent.exe /revert"` and press **Enter**.
6. Important! Restart the Windows SBS 2008 source server.

Download and Install Windows SBS 2011

These instructions are for installing Windows SBS 2011 on the IHC server.

1. After ensuring that the dependencies and requirements listed in the Before You Begin (Requirements) section are met, go to the Intel AppUp® SMB Service store at: <https://store.intelhybridcloud.com>.
2. Log in using your MSP ID and password.
3. Search for and select **Windows SBS 2011**.
4. Select the applicable Intel® Hybrid Cloud server.
5. Click **Add to Order**.
6. Complete the ordering process. Wait for download and installation to complete.

Upload SBSAnswer and IHC Migration Files to the Destination Server

These instructions are for uploading the Windows SBS answer file and the IHC migration files to the Windows SBS 2011 destination server.

Requirements:

- Completed answer file. For instructions, refer to [Create the Answer File](#).
- Windows SBS 2011 has been downloaded from the Intel AppUp® SMB Service store.

Download the Windows SBS 2011 Migration Files

1. On the management PC, download the zipped folder containing the Windows SBS 2011 migration files from the Intel download center. Be sure to use the correct download for your software version:

- For IHC server version **3.5**, download from: http://downloadcenter.intel.com/Detail_Desc.aspx?agr=Y&DwnldID=22286
- For IHC server version **3.6**, download from: http://downloadcenter.intel.com/Detail_Desc.aspx?agr=Y&DwnldID=22278

2. Unzip the IHC SBS migration folder.

The following files should be displayed within the folder:

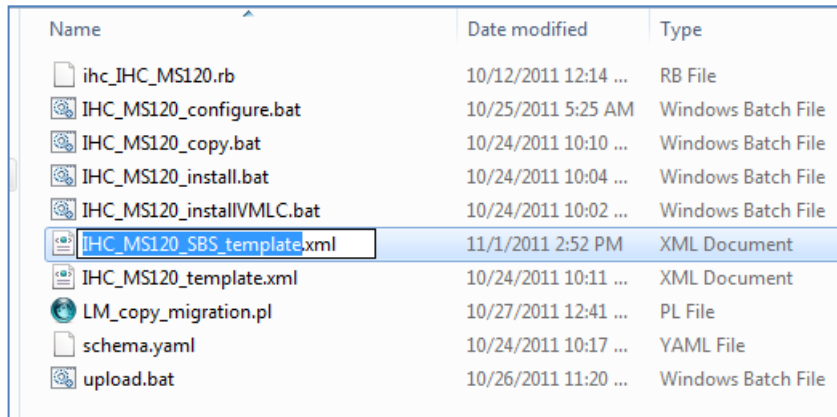
ihc_IHC_MS120.rb
IHC_MS120_configure.bat
IHC_MS120_copy.bat
IHC_MS120_install.bat
IHC_MS120_installVMLC.bat

IHC_MS120_template.xml

LM_copy_migration.pl

schema.yaml

3. Copy the **SBSAnswerFile.xml** to the unzipped migration folder.
4. Rename the SBSAnswerFile.xml to "IHC_MS120_SBS_template.xml".



Name	Date modified	Type
ihc_IHC_MS120.rb	10/12/2011 12:14 ...	RB File
IHC_MS120_configure.bat	10/25/2011 5:25 AM	Windows Batch File
IHC_MS120_copy.bat	10/24/2011 10:10 ...	Windows Batch File
IHC_MS120_install.bat	10/24/2011 10:04 ...	Windows Batch File
IHC_MS120_installVMLC.bat	10/24/2011 10:02 ...	Windows Batch File
IHC_MS120_SBS_template.xml	11/1/2011 2:52 PM	XML Document
IHC_MS120_template.xml	10/24/2011 10:11 ...	XML Document
LM_copy_migration.pl	10/27/2011 12:41 ...	PL File
schema.yaml	10/24/2011 10:17 ...	YAML File
upload.bat	10/26/2011 11:20 ...	Windows Batch File

Upload the Windows SBS 2011 Migration Files

To upload the Windows SBS 2011 migration files to the Windows SBS 2011 appliance on the IHC server:

1. From the management computer, in Windows, choose **Start**.
2. In the *Search programs and files* search box, type "cmd" and then press **Enter**. The command line window opens.
3. Type "cd" along with the path to the IHC SBS migration folder and then press **Enter**.

Example:

```
C:\>cd "Program Files <x86>/IHC_SBS_Migration_3.5"  
C:\Program Files <x86>\IHC_SBS_Migration_3.5>
```

4. Enter and execute the following command from the command line:

```
upload.bat <Intel® Hybrid Cloud server ip> <username> <password>
```

The following files should upload successfully:

ihc_IHC_MS120.rb

IHC_MS120_configure.bat

IHC_MS120_copy.bat

IHC_MS120_install.bat

IHC_MS120_installVMLC.bat

IHC_MS120_SBS_template.xml

IHC_MS120_template.xml

LM_copy_migration.pl

schema.yaml

5. Copy the migration scripts to Windows SBS 2011:
 - a. If the IHC server manager is not open, select **Start > All Programs > HybridCloudServerManager**.
 - b. Select the **Connect** tab.
 - c. Log in to the IHC server manager.
 - d. Click the **Controls** button.
 - e. Select the **Scripts** tab to open the Scripts page.
 - f. If prompted, enter the admin password.
 - g. Enter the number displayed next to "Copy migration scripts to SBS 2011" and press **Enter**.
 - h. Press any key when the "Press any key to continue" message is displayed.The copying of the migration scripts to Windows SBS 2011 is now complete.

Windows SBS 2011 Migration

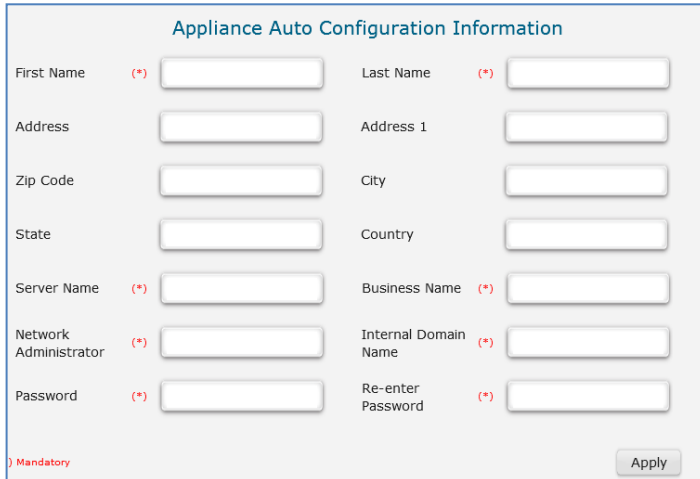
Requirements:

- Intel® Hybrid Cloud server manager is installed on the management computer.
- The steps for [Upload SBS Answer and IHC Migration Files to the Destination Server](#) have been completed.
- Verify that the DNS name between the source and destination server is resolved.
- Verify that the Windows SBS 2008 source server has a static IP.
- Ensure that all users are logged off the Windows SBS 2008 source server.
- Windows SBS 2011 has been downloaded from the Intel AppUp SMB Service store.

Start Migration

Use the post migration sections at <http://technet.microsoft.com/en-us/library/gg490796.aspx> as a supplemental guide.

1. Start Windows SBS 2011 in migration mode.
2. If the IHC server manager is not open, choose **Start > All Programs > Hybrid Cloud Server Manager**.
3. Select the **Connect** tab.
4. Log in to the IHC server manager.
5. Click the **Appliances** button to open the Appliances page.
6. Select the Windows SBS 2011 appliance.
7. Click the **Configure** tab.
8. Click **Add Network**.
9. Select **Remote** and click **Add**.
10. Click the **Start** button. The Appliance Auto Configuration Information window opens.
11. Enter information into the required fields and then click **Apply**. The migration process starts and may take up to 30 minutes to complete.




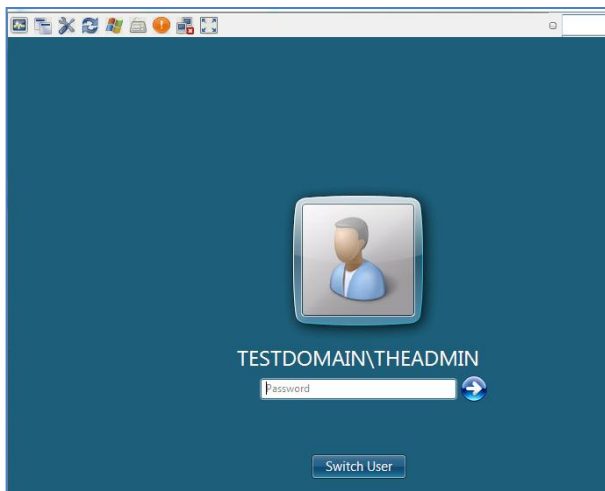
The form is titled "Appliance Auto Configuration Information" and contains the following fields:

First Name (*)	<input type="text"/>	Last Name (*)	<input type="text"/>
Address	<input type="text"/>	Address 1	<input type="text"/>
Zip Code	<input type="text"/>	City	<input type="text"/>
State	<input type="text"/>	Country	<input type="text"/>
Server Name (*)	<input type="text"/>	Business Name (*)	<input type="text"/>
Network Administrator (*)	<input type="text"/>	Internal Domain Name (*)	<input type="text"/>
Password (*)	<input type="text"/>	Re-enter Password (*)	<input type="text"/>

At the bottom left, there is a red "Mandatory" label. At the bottom right, there is an "Apply" button.

Perform Post Migration Validation

1. When the migration completes, select the Windows SBS 2011 appliance.
2. If the Windows SBS 2011 status is Stopped, click the **Start** button. The Windows SBS 2011 status changes to "Starting" and then to "Running."
3. Click the **Console** tab to open the Console page.
4. Click the **Launch** button next to VNC Console. The Windows SBS 2011 VNC opens.
5. Click the **Send Ctrl+Alt+Del to host**  button in the Windows SBS 2011 VNC.
6. Log in to the Windows SBS 2011 appliance using the administrator credentials.



7. Select **Start** and type "cmd" into the *Search programs and files* search box. The command line window opens.
8. Type "ipconfig" into the command line. The IPv4 address and gateway should match the Destination Server IP address and Default gateway entered into the SBSAnswerFile.
9. Click **Start**, right-click on **Computer** and select **Properties**. The domain and computer names should match the Windows SBS 2008 server domain name and Destination Server name entered into the SBSAnswerFile, respectively.

10. Launch the **Windows SBS Console** from the icon on the desktop:



The Windows SBS Console opens.

11. Click on **Users and Groups**. Verify that the user names and number of users match those in the Windows SBS 2008 source server.

12. If the Windows SBS 2011 is installed on an **IHC 3.6** server:

a. Click **Start** and type "services.msc" into the *Search programs and files* search box. The Services window opens.

b. Verify that the **aaupgrade** and **activeAeon XA Intel** services are started.

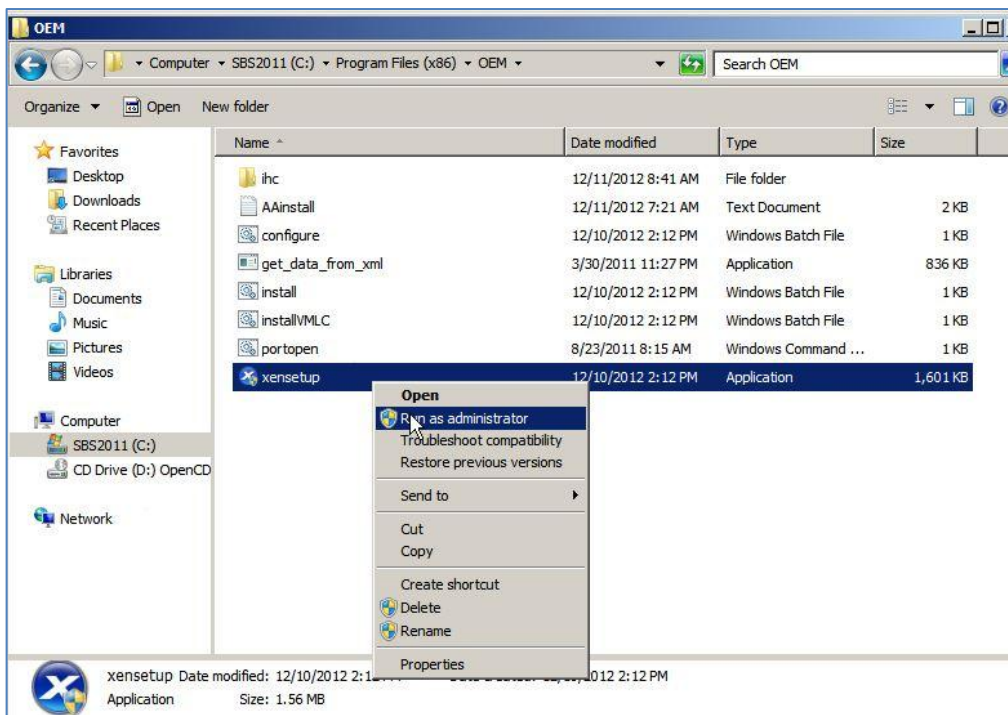
Name	Description	Status	Startup Type
aaupgrade		Started	Automatic
activAeon XA Intel Agent	activAeon ...	Started	Automatic

13. If the Windows SBS 2011 is installed on an **IHC 3.5** server:

a. Open Windows Explorer and go to **C:\Program Files (x86)\OEM**.

b. Right-click on **xensetup** and run as administrator.

c. Follow the instructions in the Citrix Tools for Virtual Machines Setup wizard until completion.



14. Restart the Windows SBS 2011 destination server. Migration is now complete.

Troubleshooting

Windows SBS 2011 Fails to Download

If Windows SBS 2011 does not begin downloading, initiate the download by synching the server with its work queue at the portal.

1. If the IHC server manager is not open, select **Start > All Programs > Hybrid Cloud Server Manager**.
2. Select the **Connect** tab.
3. Log in to the IHC server manager.
4. Select **Controls** and click the **Maintenance** tab.
5. Click **Sync** to initiate the download.

Migration Fails to Detect the Windows SBS 2008 Source Server Name

1. Verify that all users are logged out of the SBS 2008 server.
2. In the Windows SBS 2011 (destination server) VNC window, do the following:
 - a. Press Shift+F10.
 - b. Ping the source server IP.
 - c. Type "control netconnections" in the command line and press **Enter**.
 - d. Right-click the enabled LAN (this LAN should contain the IP address of the destination server as designated by the answer file).
 - e. Click **Internet Protocol Version 4 (TCP/IPv4)**.
 - f. Click **Properties**.
 - g. Click **Advance**.
 - h. Select the **DNS** tab.
 - i. Select the **Append these DNS suffixes** option and click **Add**.
 - j. Enter the FQDN (i.e., anything.local) and click **Add**.
 - k. Click **OK** and then close the TCP/IPv4 Properties window.
 - l. Log back in to the Windows SBS 2011 destination server and restart the migration.

Migration Fails to Log into the Source Server Domain

1. Log in to the Windows SBS 2008 source server.
2. Stop and restart the DNS service.
 - a. Type "services.msc" into the "Search programs and files" field.
 - b. Search for **DNS services**.
 - c. Stop and restart the DNS services.
3. Clear the DNS cache.
 - a. Bring up the command line.
 - b. Type "ipconfig /flushdns" and press **Enter**.
4. Log back in to the Windows SBS 2011 destination server and restart the migration.