

Intel® Local Toolbar version 1.0

Step-by-Step User Guide

Contents

| | |
|---|---|
| 1. Installing Intel® Local Toolbar..... | 3 |
| 2. Displaying Your Current Location..... | 3 |
| 3. Saving Your Current Location..... | 3 |
| 4. Saving a Location Other Than Your Current One..... | 4 |

Installing Intel® Local Toolbar

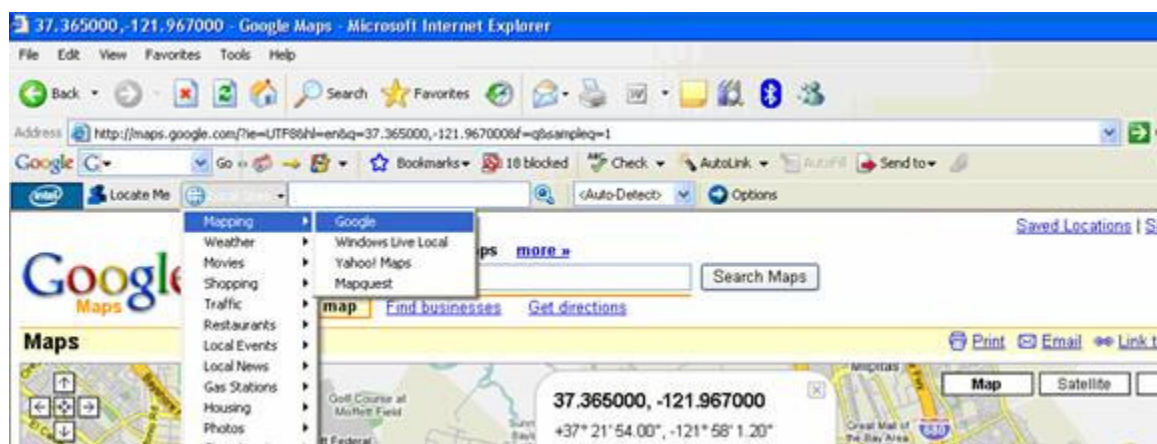
To install the Intel® Local Toolbar:

1. Download and double-click **Intel(R)_Local_Toolbar.exe**.
2. Close all Internet Explorer windows.
3. Follow the onscreen instructions.
4. After the installer is finished, open Internet Explorer.
5. The Intel Local Toolbar is ready to use.

Displaying Your Current Location

To display your current location:

1. Select **Locate Me or Local Sites>Mapping>Google** as shown in the picture below, or select another available mapping site.



2. Your toolbar passes your location to the mapping channel site, which then displays it. The Intel Local Toolbar uses GPS and IP addressing to establish your location. If your GPS is not connected, not on, or not visible to GPS satellites, then the system uses your current IP address and consults a service to establish the approximate physical location of that IP address. Using the IP address is not very accurate and results may vary.

Try displaying your current location with your GPS connected while outdoors. Remember that you'll need to be connected to the Internet either via WiFi or GPRS to use the browser toolbar.

Saving Your Current Location

Another feature of Intel Local Toolbar is the ability to save locations whether it's the one you are physically at or others such as your home, your office, or your friend's house. These extra locations can be handy for local searches while in another location. For example, you might want to check next week's weather in a place to which you frequently travel, so you save it as a favorite location.

In the following image, Home and Office are saved as favorite locations. You can choose your favorite location such as home and Intel Local will display your desired location.

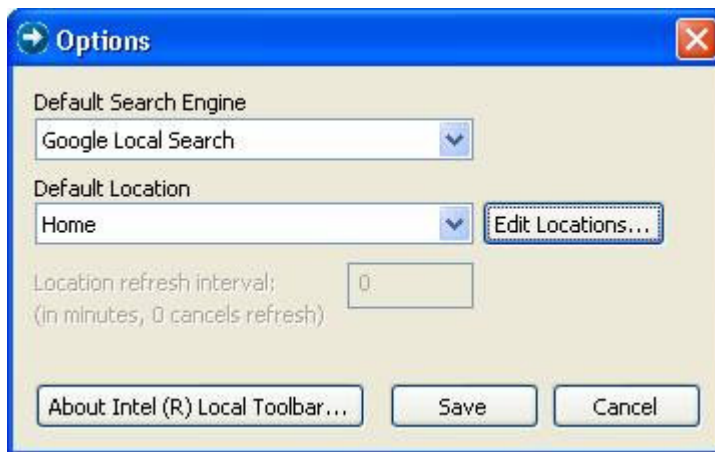


Saving a Location Other Than Your Current One

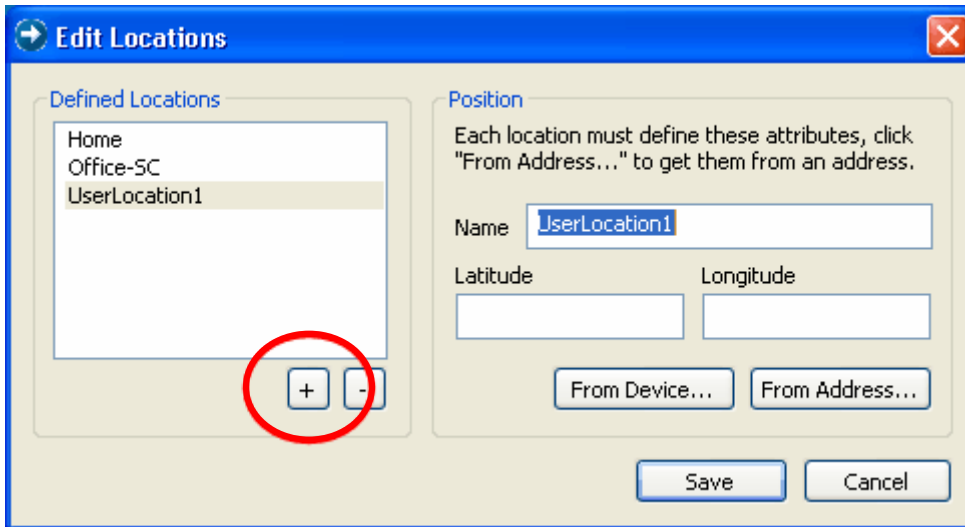
You don't have to be physically at a location in order to save it. You can add a location by entering either the latitude and longitude, or an address.

To save a location other than your current one:

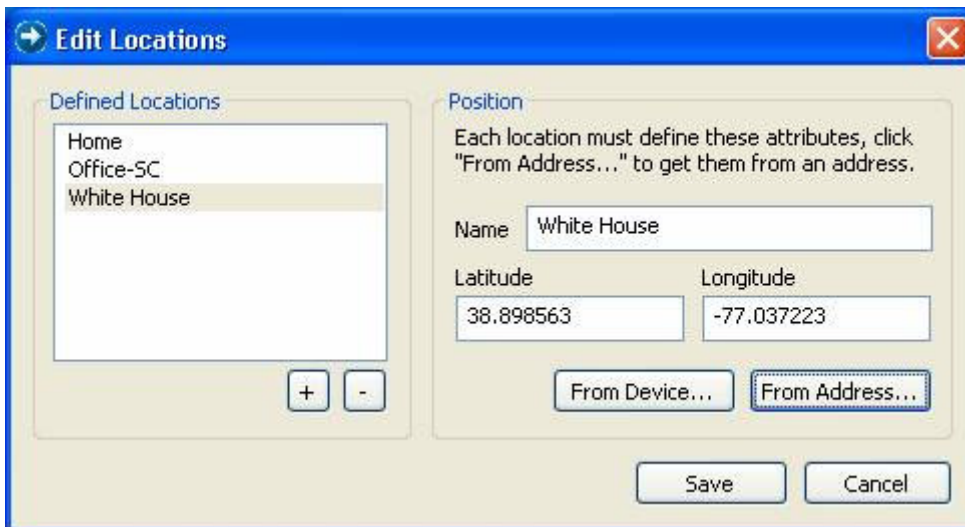
1. Click **Options**.
2. In the **Options** dialog box, click **Edit Locations....**



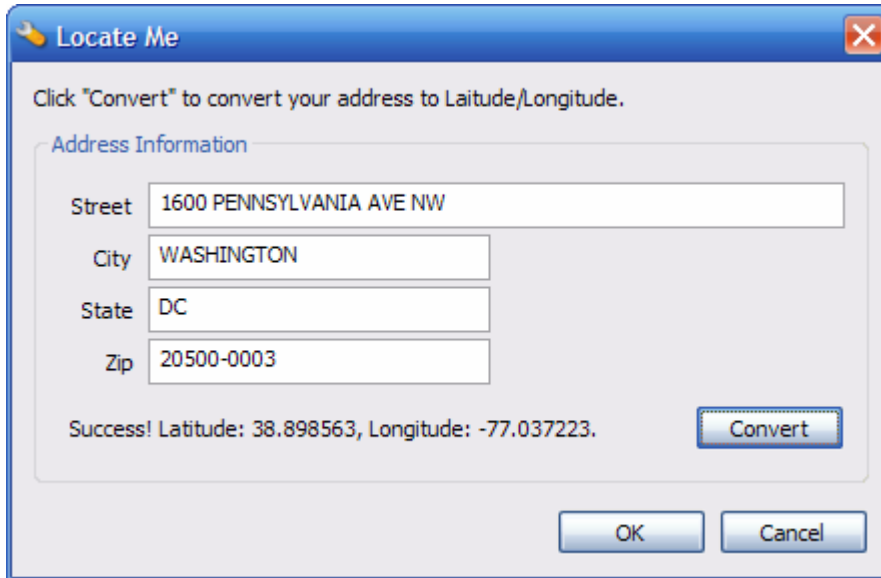
3. In the **Edit Locations** dialog box, click **+** to insert a new location.



4. Select **UserLocation1**, and rename it with a descriptive name.
5. Click **From Address....**



6. In the **From Address** dialog box, shown below, enter the address of the location and click **Convert**. After getting the latitude and longitude, the system should display **Success**.



7. Click **OK**, and then **Save** on the two remaining dialog boxes.

You can now search for places of interest near your saved location.

Intel Copyright notice

Intel Trademark notices

Non-Intel Trademark notices

Technical Collateral Disclaimer

Please refer the following notice section:

Disclaimer and Legal Information

The information in this document is subject to change without notice and Intel Corporation assumes no responsibility or liability for any errors or inaccuracies that may appear in this document or any software that may be provided in association with this document. This document and the software described in it are furnished under license and may only be used or copied in accordance with the terms of the license. No license, express or implied, by estoppel or otherwise, to any intellectual property rights is granted by this document. The information in this document is provided in connection with Intel products and should not be construed as a commitment by Intel Corporation.

EXCEPT AS PROVIDED IN INTEL'S TERMS AND CONDITIONS OF SALE FOR SUCH PRODUCTS, INTEL ASSUMES NO LIABILITY WHATSOEVER, AND INTEL DISCLAIMS ANY EXPRESS OR IMPLIED WARRANTY, RELATING TO SALE AND/OR USE OF INTEL PRODUCTS INCLUDING LIABILITY OR

WARRANTIES RELATING TO FITNESS FOR A PARTICULAR PURPOSE, MERCHANTABILITY, OR INFRINGEMENT OF ANY PATENT, COPYRIGHT OR OTHER INTELLECTUAL PROPERTY RIGHT. Intel products are not intended for use in medical, life saving, life sustaining, critical control or safety systems, or in nuclear facility applications. Designers must not rely on the absence or characteristics of any features or instructions marked "reserved" or "undefined." Intel reserves these for future definition and shall have no responsibility whatsoever for conflicts or incompatibilities arising from future changes to them.

The software described in this document may contain software defects which may cause the product to deviate from published specifications. Current characterized software defects are available on request.

[BunnyPeople, Celeron, Celeron Inside, Centrino, Centrino logo, Core Inside, FlashFile, i960, InstantIP, Intel, Intel logo, Intel386, Intel486, Intel740, IntelDX2, IntelDX4, IntelSX2, Intel Core, Intel Inside, Intel Inside logo, Intel. Leap ahead., Intel. Leap ahead. logo, Intel NetBurst, Intel NetMerge, Intel NetStructure, Intel SingleDriver, Intel SpeedStep, Intel StrataFlash, Intel Viiv, Intel vPro, Intel XScale, IPLink, Itanium, Itanium Inside, MCS, MMX, Oplus, OverDrive, PDCharm, Pentium, Pentium Inside, skool, Sound Mark, The Journey Inside, VTune, Xeon, and Xeon Inside] (only the names that are actually used in the document.) are trademarks or registered trademarks of Intel Corporation or its subsidiaries in the United States and other countries.

* Other names and brands may be claimed as the property of others.
Copyright © 2007, Intel Corporation. All rights reserved.