



Copyright © 2001, Intel Corporation. All rights reserved.
 Intel Corporation, 5200 N.E. Elam Young Parkway,
 Hillsboro, OR 97124-6497
 Intel Corporation assumes no responsibility for
 errors or omissions in this document.
 Nor does Intel make any commitment to update
 the information contained herein.
 *Other product and corporate names may be trademarks of other
 companies and are used only for explanation and to the owners'
 benefit, without intent to infringe.

Quick Install Guide Intel® Wireless Gateway


Support: www.intel.com/support
 Outside North America: www.intel.com/support/9089.htm

Before You Begin...

Perform the following steps before plugging in any power cables:


- Verify that the package contains:
 - Intel® Wireless Gateway unit with removable stand
 - Red Cross-over Cable used when directly connecting a single, wired desktop PC or laptop directly to the Intel® Wireless Gateway LAN port
 - Power supply
 - Power supply cord
 - Some international versions of the product contain multiple international power cords. Use the power cord appropriate for your country's connection type.
 - Literature kit including:
 - CD-ROM with full documentation, in a paper sleeve
 - Intel® Wireless Gateway Quick Install Guide
 - Intel® Wireless Gateway Regulatory Compliance Label
 - Internet Service Provider (ISP) Worksheet for filling out your ISP settings to be used during configuration

- After removing the Intel® Wireless Gateway unit from the box, apply regulatory compliance labels to its under side.
- Fill out your *Internet Service Provider (ISP) Worksheet*. Generally, your ISP or installer provides this information. If not, call your ISP for assistance.
- Make sure that the wired client you use for setup and configuration is configured to obtain an IP address automatically.

 Note To do this, you'll need to set your TCP/IP option to obtain an IP address automatically. For instructions, consult online Help for Windows* and search for **TCP/IP**

Wireless Network Setup...


To set up the Intel® Wireless Gateway via a wired connection, use one of two network setups shown in Figures 1 and 2. In the first setup, one wired client is connected directly to your Intel® Wireless Gateway. In the second, two or more wired clients are connected via a hub or switch to your Intel® Wireless Gateway.

 Note For either network setup, the computer you plan to use for configuring the Intel® Wireless Gateway must have an Ethernet adapter installed. If you have an all-wireless network, refer to the *Installing the Intel® Wireless Gateway Through a Wireless Connection* section of the *Intel® Wireless Gateway User's Guide*.

- After your wireless network is set up, configured, and operating correctly, you need to alter your security settings to ensure data security. To do so, you'll need to make sure that you change your SSID and security settings. For more information on how to alter security settings, refer to the *Wireless Settings* portion of the *Configuring the Intel® Wireless Gateway* section within the *Intel® Wireless Gateway User's Guide*.
- The two network setups presented earlier in this guide are two of many ways you can set up your network. A more complex wireless network may be more appropriate for your networking strategy. For more information about more complex wireless networks, refer to the *Configuring the Intel® Wireless Gateway* section of the *Intel® Wireless Gateway User's Guide*.
- You are now ready to use clients that use wireless adapters with your network. Install wireless adapters into the clients and then configure the adapters to communicate with the Intel® Wireless Gateway. For information about installing and configuring your wireless adapter, as well as your adapter's default settings, refer to your adapter's documentation.

Then, for either network setup, perform the following steps:

- Physically connect to and power up the Intel® Wireless Gateway as follows:
 - Plug in the Intel® Wireless Gateway to an AC power outlet. If required, first attach the international power converter appropriate for your country's connection type.

 Note A minimum separation of 5 cm should be maintained between the radiating element of this product and nearby persons to comply with FCC rules for RF exposure.

- If you are setting up using a single, wired client, connect the red Cross-over Cable between the Intel® Wireless Gateway's LAN port and the computer's LAN port. See Figure 1.
- If you are setting up using multiple, wired clients, connect each wired client via Ethernet cable to a hub or switch. Then, connect the hub or switch to the gateway's LAN port via Ethernet cable. See Figure 2.
- If you do not have a wired, Ethernet-ready client available, but wish to set up and configure your Intel® Wireless Gateway using a wireless client, refer to the *Installing the Intel® Wireless Gateway Through a Wireless Connection* section of the *Intel® Wireless Gateway User's Guide*.
- Make sure the DSL box or cable modem is connected to the Internet Service Provider.

continue

Figure 1. Setup Using a Single, Wired Client

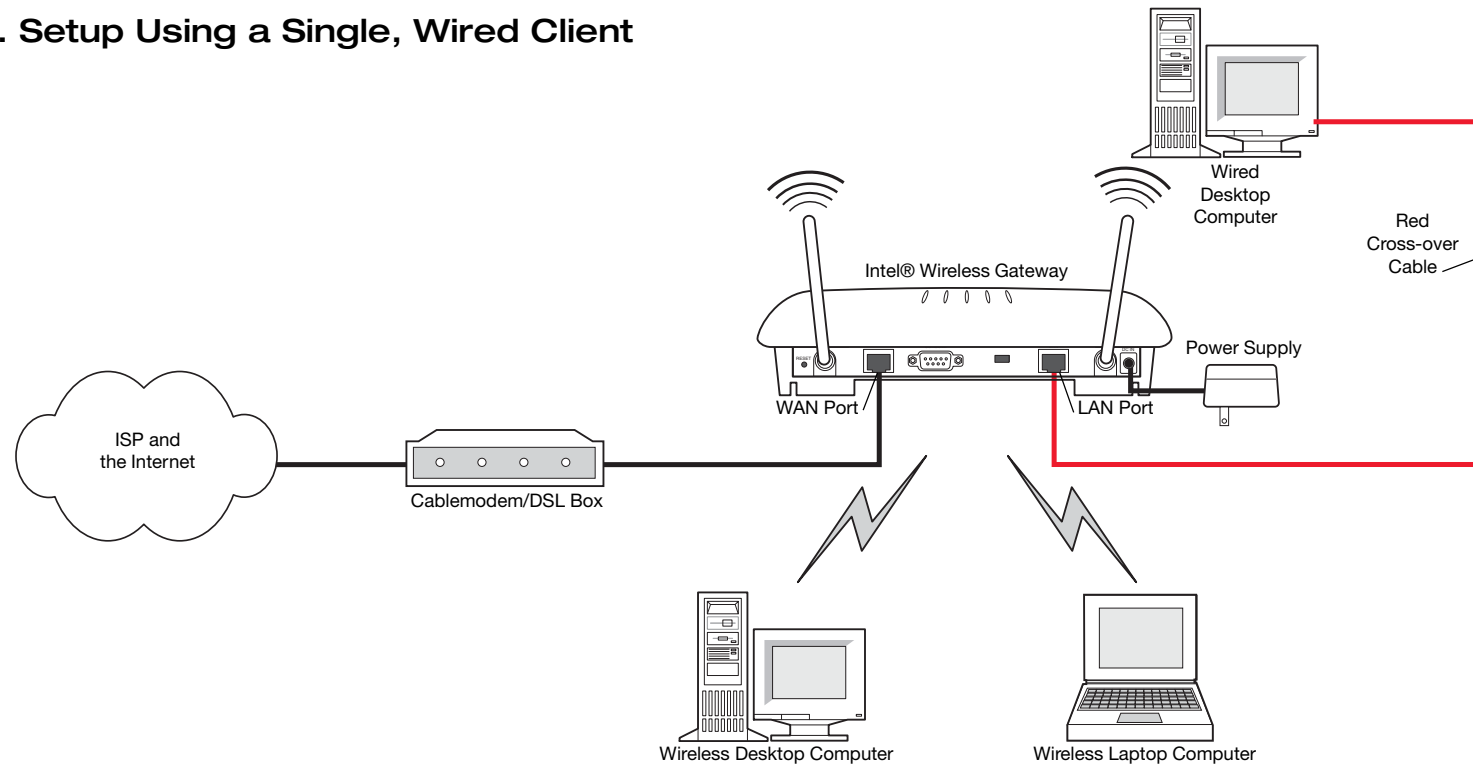
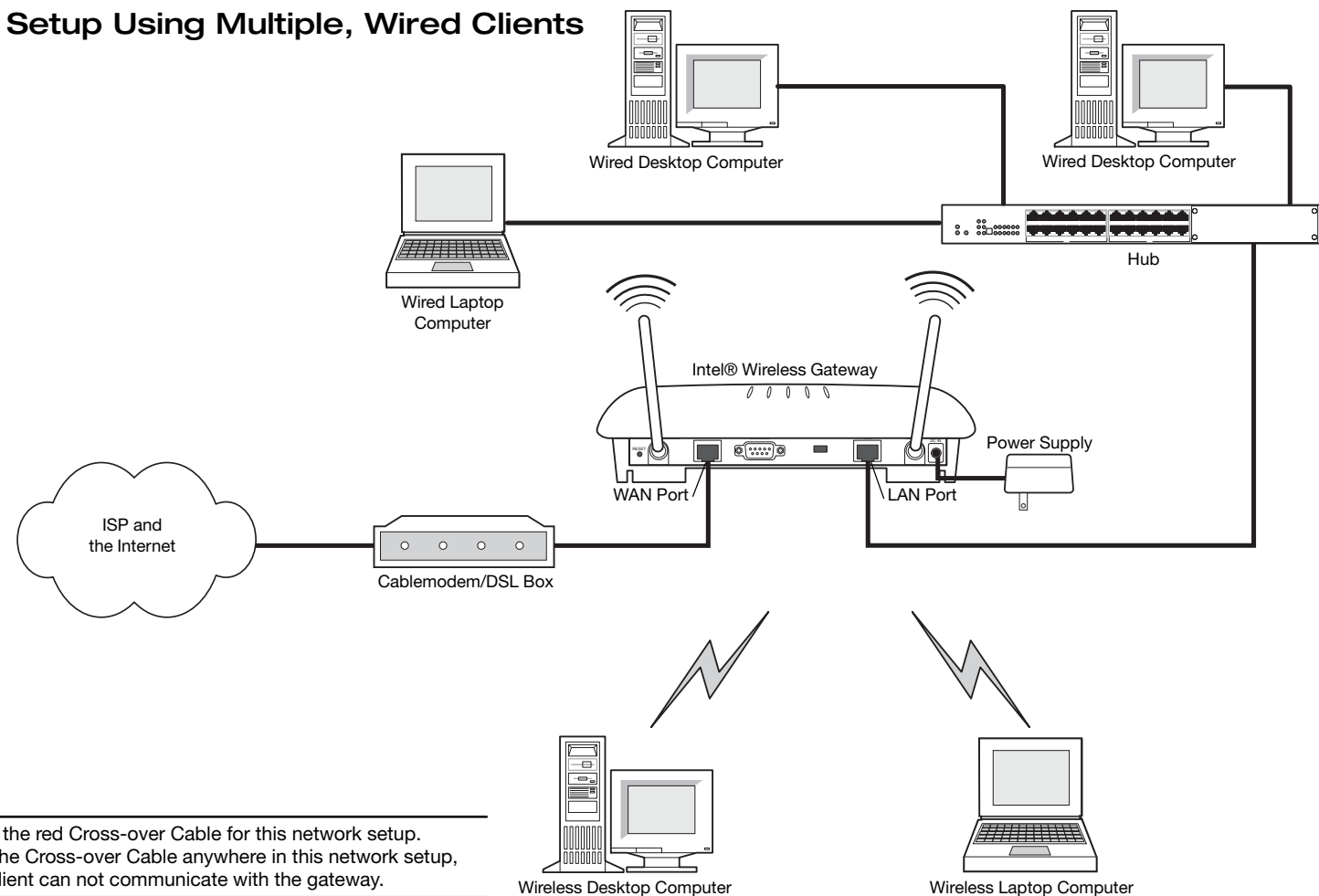


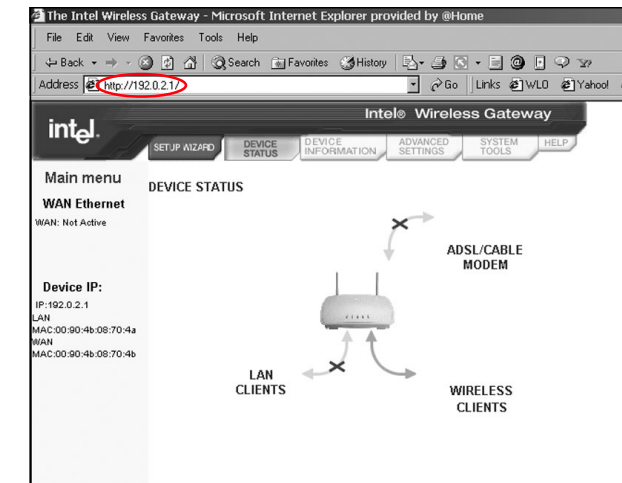
Figure 2. Setup Using Multiple, Wired Clients



Do not use the red Cross-over Cable for this network setup. If you use the Cross-over Cable anywhere in this network setup, the wired client can not communicate with the gateway.

2. Restart the wired desktop PC or laptop you are using to configure your Intel® Wireless Gateway.
3. Access the Intel® Wireless Gateway via the Web Management Tool as follows:
 - On a wired client, access your web browser.
 - In the **Address** field, enter the default IP address, **http://192.0.2.1**. See Figure 3. The Web Management Tool's Device Status page is displayed.

Figure 3. Web Management Tool Device Status Page



4. Configure the Intel® Wireless Gateway as follows:
 - Click the **Setup Wizard** button and enter **Intel** (with capital I) as the default user name and password.
 - Leave the Wireless Settings and Function Settings screens with their default values for now.
 - Enter values listed on your *Internet Service Provider (ISP) Worksheet* into the Cable/ADSL ISP Settings and the ISP Additional Settings screens. See item 3 under **Before you Begin...**
 - When finished entering the settings, click **Save and Restart**. The Intel® Wireless Gateway automatically saves the entered settings and then restarts.



If, during the configuration, you change the default IP address, but you wish to refer back to screens within the Web Management Tool, you must enter the *new* IP address in your web browser's **Address** field to access the tool again.

5. Test the Intel® Wireless Gateway as follows:
 - If the Device Status screen shows successful connections, open your browser and access the Internet.
 - If the Device Status screen does not show successful connections, or other problems exist:
 - Recheck all connections.
 - Recheck all configuration settings.
 - Restart each computer.
 - Reset the Intel® Wireless Gateway by turning the power off and then on again.
 - If problems persist, refer to the *Troubleshooting for the Web Management Tool* section of the *Intel® Wireless Gateway Configuration User's Guide*.

continue