



Intel® PRO/Wireless 2100 LAN MiniPCI Adapters Types 3B & 3A

Product Description:

Embedded 2.4 GHz Wireless Local Area Network (LAN) MiniPCI adapters. The MiniPCI Types 3B and 3A form factors are designed for notebook computer systems where overall thickness must be kept to an absolute minimum.



Type 3B MiniPCI shown

Key Features:

- 2.4 GHz support
- Up to 11 Mbps at 2.4 GHz
- IEEE 802.11b standard technology
- Industry standard wireless LAN security support is available (802.1X, WEP, WPA**) with enabling software implementation.**
- Cisco* Compatible Extensions (such as LEAP and CKIP) support is available on certain models. Check with your PC manufacturer for Cisco Compatible validation.**
- Bluetooth* co-existence capability

Intel in
Communications

Technical Specifications

Model Name	Intel® PRO/Wireless 2100 LAN MiniPCI Adapter Type 3B Intel® PRO/Wireless 2100 LAN MiniPCI Adapter Type 3A
Dimensions (L x W x H)	Type 3B: 44.60mm x 59.75mm x 4.90mm (max) Type 3A: 50.95mm x 59.75mm x 4.90mm (max)
Weight	Type 3B: 11.75g Type 3A: 12.90g
Antenna Interface Connector	Hirose U.FL-R-SMT mates with cable connector U.FL-LP-066
Radio ON/OFF control	Supported by both hardware and software
Connector Interface	124-pin SO-DIMM edge connector
LEDs output	Link, Activity
Operating Temperature	0 to +70° Celsius
Humidity	0 to 95% non-condensing
Frequency Modulation	2.4 GHz (802.11b)
Frequency Band	2.4 GHz to 2.497 GHz
Modulation	DBPSK, DQPSK, CCK
Wireless Medium	2.4GHz ISM: Direct Sequence Spread Spectrum (DSSS)
Channels	Most of World (MOW) SKU 1-11; Rest of World (ROW) SKU 1-14
Data Rates	Up to 11Mbps, 5.5 Mbps, 2 Mbps, 1 Mbps
Transmit Output Power	16.25dBm (max)
Adapter Power Consumption	
Transmit	1.914 W
Receive	1.650 W
Idle Associated	270 mW
Idle Unassociated	170 mW
Sleep	198 mW
Voltage	3.3 V

Intel PRO
Network Connections

Technical Specifications continued

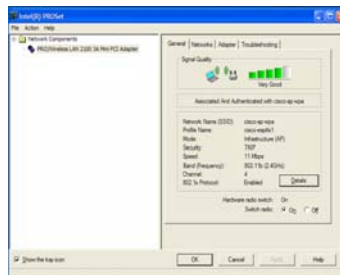
Operating System	Microsoft* Windows* XP Professional, Windows* XP Home, Windows* XP Tablet, Windows* 2000, Windows* 98 (Retail), Windows* 98SE, Windows* NT4.0 (SP6 or later)
Wi-Fi Alliance	Wi-Fi CERTIFIED** for WPA
WHQL Certification	Yes
WLAN Standard	IEEE 802.11b
Architecture	Infrastructure or ad hoc (peer-to-peer)
Security	WPA**, 802.1X, EAP-TLS, 128-bit and 64-bit WEP, CKIP**
Proprietary security	Supports Cisco* Compatible Extensions such as LEAP**and CKIP**
Product Safety	UL, C-UL, CB (IEC 60590)
Compliance	Two (2) SKUs for all major countries

Products Available	Product Code
Intel® PRO/Wireless 2100 LAN MiniPCI Adapter Type 3B (MOW, Ch 1-11)	WM3B2100NA
Intel® PRO/Wireless 2100 LAN MiniPCI Adapter Type 3B (ROW, Ch 1-14)	WM3B2100WW
Intel® PRO/Wireless 2100 LAN MiniPCI Adapter Type 3A (MOW, Ch 1-11)	WM3A2100NA
Intel® PRO/Wireless 2100 LAN MiniPCI Adapter Type 3A (ROW, Ch 1-14)	WM3A2100WW

Intel® PROSet Software

As part Intel® PRO Network Connection Software, Intel® PROSet software provides driver consistency among desktops, notebooks, and servers in one simple common user interface. Intel PROSet software helps enable a superior mobile experience by providing:

- Connection Status
- Network/NIC Management



Connection Status

- Signal Strength
- Network Name
- Security
- Radio On/Off



Network/NIC Management

- Network Management
 - Network Name
 - Security Settings
 - Network Discovery
 - Multiple profile setup
- NIC Management
 - Power Settings

*Other names and brands may be claimed as the property of others

** Intel® PROSet software and/or some security solutions may not be supported by your PC manufacturer. Check with your PC manufacturer for details on availability.

Information in this document is provided in connection with Intel products. No license, express or implied, by estoppel or otherwise, to any intellectual property rights is granted by this document. Except as provided in Intel's Terms and Conditions of Sale for such products, Intel assumes no liability whatsoever, and Intel disclaims any express or implied warranty, relating to sale and/or use of Intel products including liability or warranties relating to fitness for a particular purpose, merchantability, or infringement of any patent, copyright or other intellectual property right. Intel products are not intended for use in medical, life saving, or life sustaining applications. Intel may make changes to specifications and product descriptions at any time, without notice. For the most current product information, please visit: <http://www.intel.com/network>

Intel and the Intel logo are trademarks or registered trademarks of the Intel Corporation or its subsidiaries in the United States and other countries.

Copyright © Intel Corporation, 2002-2003. All rights reserved.

061803v2