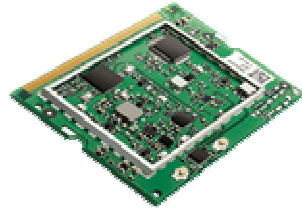


Intel® PRO/Wireless 2100A LAN MiniPCI Adapter Type 3B



Product Description:

Embedded 802.11a/b dual band (5 GHz and 2.4 GHz) Wireless Local Area Network MiniPCI adapters. The MiniPCI Type 3B form factor is designed for notebook computer systems where overall thickness must be kept to an absolute minimum.



Type 3B MiniPCI shown

Key Features:

- 802.11a/b dual band (5 GHz and 2.4 GHz) supported
- Up to 54 Mbps at 5 GHz, and up to 11 Mbps at 2.4 GHz
- IEEE 802.11a/b standard technology
- Industry standard wireless LAN security support is available (802.1X, WEP, WPA**) with enabling software implementation.**
- Cisco* Compatible Extensions (such as LEAP and CKIP) support is available on certain models. Check with your PC manufacturer for Cisco Compatible validation.**
- Bluetooth* co-existence capability**

Technical Specifications

Model Name	Intel® PRO/Wireless 2100A LAN MiniPCI Type 3B Adapter (WM3B2100A)
Dimensions (H x W x D)	1.75 in x 2.35 in x 0.19 in (44.60 mm x 59.75 mm x 4.9 mm)
Weight	12g
Antenna Interface Connector	Hirose U.FL-R-SMT mates with cable connector U.FL-LP-066
Dual Diversity Antenna	On-board dual diversity switching support for systems designed with two antennas
Radio ON/OFF control**	Supported by both hardware and software
Connector Interface	MiniPCI Type III edge connector
LEDs output	Link, Activity
Operating Temperature	0 to +70° Celsius
Humidity	0 to 95% non-condensing

Frequency Modulation	5 GHz (802.11a)	2.4 GHz (802.11b)
Frequency Band	5.15 GHz to 5.35 GHz	2.4 GHz to 2.497 GHz
Modulation	BPSK, QPSK, 16 QAM, 64 QAM	DBPSK, DQPSK, CCK
Wireless Medium	5 GHz UNII: Orthogonal Frequency Division Multiplexing (OFDM)	2.4GHz ISM: Direct Sequence Spread Spectrum (DSSS)
Channels	Up to 8 channels	Up to 14 Channels
Data Rates	54, 48, 36, 24, 18, 12, 9, 6 Mbps	11, 5.5, 2, 1 Mbps
Indoor Range	40 ft (12 m) @ 54 Mbps / 300 ft (91 m) @ 6 Mbps	100 ft (30 m) @ 11 Mbps / 300 ft (90 m) @ 1 Mbps
Outdoor Range	100 ft (30 m) @ 54 Mbps / 1000 ft (305 m) @ 6 Mbps	400 ft (120 m) @ 11 Mbps / 1500 ft (460 m) @ 1 Mbps
Transmit Output Power	14dBm (typical)	16dBm (typical)
Adapter Power Consumption (typical)		
Transmit	1.7 W	1.6 W
Receive	1.3 W	1.0 W
Standby	135 mW	135 mW
Sleep	45 mW	45 mW

Intel in
Communications

Intel PRO
Network Connections

Technical Specifications continued

Operating System	Microsoft® Windows® XP (Professional, Home, Tablet), 2000
Wi-Fi Alliance	Wi-Fi CERTIFIED® for 2.4 GHz band, 5 GHz band and WPA
WHQL	YES

WLAN Standard	IEEE 802.11a and IEEE 802.11b
Architecture	Infrastructure or ad hoc (peer-to-peer)
Roaming***	802.11a and 802.11b compliant for seamless roaming between respective access points (802.11a, 802.11b, dual band 802.11a/b)
Security	
Network Authentication	Open, Shared, WPA**, WPA-PSK 802.1X: MD5, TLS, TTLS, LEAP, PEAP (TLS, GTC, MS-CHAP-V2)
Data Encryption	WPA-TKIP, CCX-CKIP, 128-bit and 64-bit WEP, None
Product Safety	UL, C-UL, CB (IEC 60590)
Major Worldwide Approvals	FCC Part 15.407 ETSI 300 328, ETSI 301 893 EN 301 489, CE Japan – ARIB STD T66, RCR STD T33, ARIB STD T71

Products Available	Product Code
Intel® PRO/Wireless 2100A LAN MiniPCI Type 3B Adapter (.11a/b Dual Band)	WM3B2100A
Intel® PRO/Wireless 2100 LAN MiniPCI Type 3B Adapter (.11b only)	WM3B2100
Intel® PRO/Wireless 2100 LAN MiniPCI Type 3A Adapter (.11b only)	WM3A2100

Intel® PROSet Software**

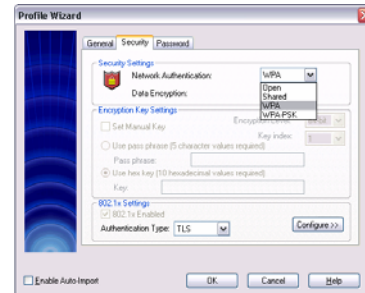
As part of Intel® PRO Network Connection Software, Intel® PROSet software provides driver consistency in one simple common user interface. Intel PROSet software helps enable a superior mobile experience by providing:

- Connection Status
- Network/Wireless Adapter Management



Connection Status

- Signal Strength
- Network Name
- Security
- Radio On/Off



Network/Wireless Adapter Management

- Network Management
 - Network Name
 - Security Settings
 - Network Discovery
 - Multiple profile setup
- Wireless Adapter Management
 - Power Settings

* Other names and brands may be claimed as the property of others

** Features, Intel® PROSet software and/or some security solutions may not be supported by your PC manufacturer. Check with your PC manufacturer for details on availability.

*** Client roaming is supported only between each respective band and mode of access points.

Information in this document is provided in connection with Intel products. No license, express or implied, by estoppel or otherwise, to any intellectual property rights is granted by this document. Except as provided in Intel's Terms and Conditions of Sale for such products, Intel assumes no liability whatsoever, and Intel disclaims any express or implied warranty, relating to sale and/or use of Intel products including liability or warranties relating to fitness for a particular purpose, merchantability, or infringement of any patent, copyright or other intellectual property right. Intel products are not intended for use in medical, life saving, or life sustaining applications. Intel may make changes to specifications and product descriptions at any time, without notice. For the most current product information, please visit: <http://www.intel.com/network>