

Appendix F Installing the Audio Drivers for the Windows® NT 4.0 Server / Workstation

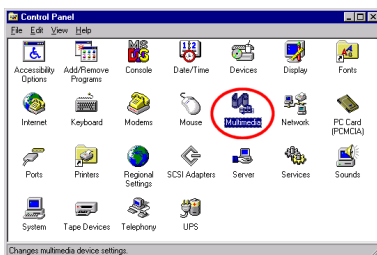
In this section we will show you how to install the audio drives to your Windows® NT 4.0 Server/Workstation operating system. All screen shot are from Windows® NT 4.0 server version. Before you install the audio drivers, please install Windows® NT 4.0 Service Pack 4 (or the latest version) first. Then you can install the audio drivers.

Note F-1

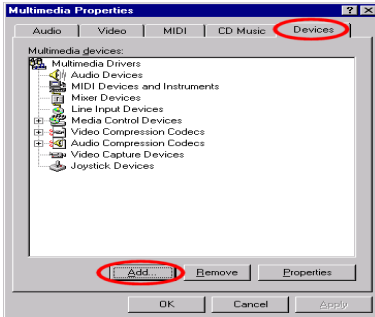
Details of the Windows® NT 4.0 Server/Workstation operating system are not mentioned in this manual. If you have any problems with the settings, operating or installing Windows® NT 4.0 Server/Workstation, please refer to your Windows® NT 4.0 Server/Workstation user's manual or other databases provided by Microsoft® Corporation.

Note F-2

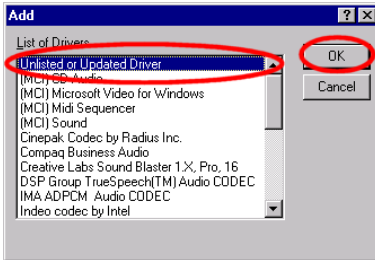
For Windows® NT 4.0 Server/Workstation operating system, you don't need to install the INF Installation Utility. But you have to install the Windows® NT 4.0 Service Pack 4 (or latest version) first.



First you need go to the "Control Panel" and double click the item "Multimedia".



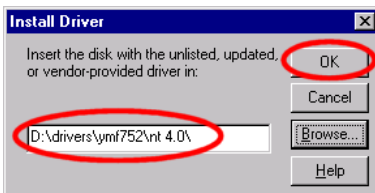
Choose the "Devices" folder then click the "Add..." button.



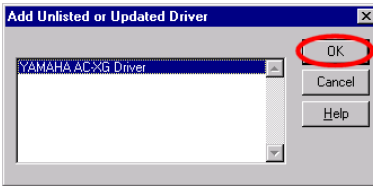
Then choose the "Unlisted or Updated Driver" and click the "OK" button.

NOTE

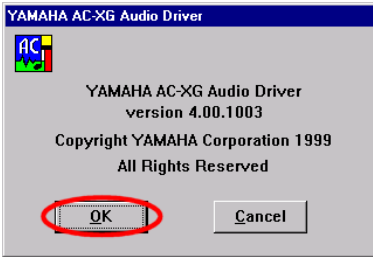
If you want to play a MIDI file in Windows NT, you have to install Soft Synthesizer S-YXG50. You can find this software in the SL6 CD-ROM.



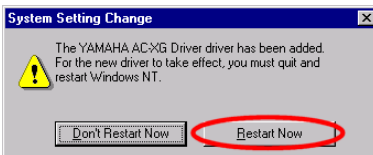
You have to specify and manually type the path of driver location. We've put the audio drivers under the "DRIVERS\YMF752\NT4.0". The code name of the CD-ROM drive will depend on how many devices installed on your computer system. Here it is shown as D:\.



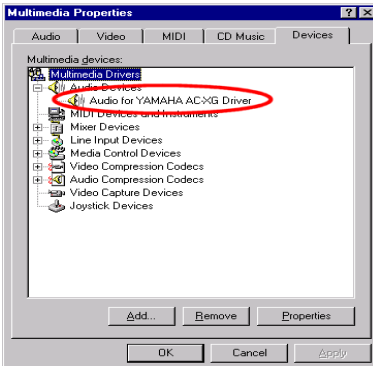
When Windows finds the driver you can choose the item "YAMAHA AC-XG Driver" and click "OK" button.



Click "OK."



The screen shows the "System Setting Change" message. You need to restart your computer to complete the updating process. Click the "Restart Now" button to restart your computer.



After Windows® NT restarts, check the "Multimedia Properties" again. You will see the Yamaha AC-XG had been identify.

