

# 1). Set System Jumpers

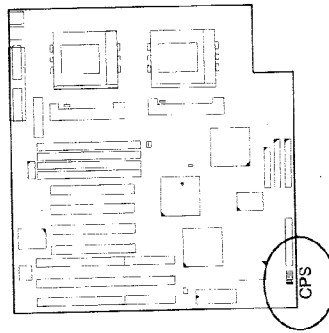
## Jumpers

Jumpers are used to select the operation modes for your system. Some jumpers on the board have three metal pins with each pin representing a different function. To "set" a jumper, a black cap containing metal contacts is placed over the jumper pin/s according to the required configuration. A jumper is said to be "shorted" when the black cap has been placed on two of its pins.

**NOTE :** Users are not encouraged to change the jumper settings not listed in this manual. Changing the jumper settings improperly may adversely affect system performance.

### Clear Password: CPS

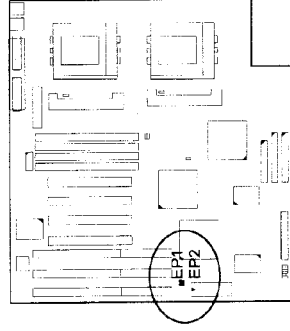
The password clear jumper lets you set the password configuration to "Enabled" or "Disabled". You may need to enable password clear if you forget your password.



Disabled (Default)

## Flash EPROM Type Selection: EP1 and EP2

These two jumpers allow you to select the flash EPROM mode under different sizes, 1MB and 2MB. The default settings are SST rows in both tables below.



### EPROM Size is 1MB :

	EP1	EP2
AMD		
Intel/MIXC		
ATMEL		
SST		

### EPROM Size is 2MB :

	EP1	EP2
AMD		
Intel/MIXC		
ATMEL		
SST		