

## Software Utilities

### Starting Installation

To run each feature, simply click on the wanted software item in the main menu.

### LANDesk Client Manager (manufacturing option)

The LDCM software must be installed to use the hardware manager. It is used for remote management over network and is of no use to non-networked systems.

### LDCM 3.21 Specification Overview

Intel LANDesk Client Manager v3.21 provides real-time PC health monitoring, alerting and self-diagnostics that will make your PCs more reliable and easier to support. It offers far more configurability than its predecessor, Intel LANDesk Client Manager v3.0. and supports DMI v2.0 specifications. IntelLANDesk Client Manager v3.21 enables you to:

#### Review system inventory

Client Manager enables you to view hundreds of inventoried items. Some of these items are software related, while many others are hardware related.

#### View DMI-compliant component information

Client Manager enables you to view component information that is compliant with the Desktop Management interface (DMI). This means you manage third-party DMI-compliant components not included with Client Manager.

#### Back up and restore system configuration files

Client Manager enables you to back up and restore system configuration files. Whenever you plan on changing the system configuration, You can make a backup set. If the system no longer works correctly, after you change the system configuration, you can simply restore the system configuration with the backup set.

**NOTE:** By default the Windows 95 and Windows NT registry files aren't part of the snapshot file list. This means the restoration of a snapshot may not be effective.

### Troubleshoot

Since Client Manager enables you to View the system inventory, you can easily troubleshoot system problem.

### Receive notifications for system events

Client Manager enables you to receive notification of certain system events. For example, if the system is running low on virtual memory, you are notified of the potential problem.

### Transfer files to and from client workstations

As an administrator, you have the ability to transfer files to and from client workstations. This is helpful, for example, when you need to update a client workstation driver.

### Remotely reboot client workstations

Administrators also have the ability to remotely reboot a workstation. This is helpful when you want system configuration changes to take effect.

### Waking up a computer

You can use Client Manager to "wake up" a remote computer that is powered off or "sleeping" in a reduced-power state.

## Two Options of LDCM Setup

**LDCM Local Setup:** Install software to monitor the *local* system. **(Recommended)** Settings can be auto-detected or changed. The installation of it is straight forward. First select *LDCM Local Setup* in the main menu, then all the way down to the end of the installation. Reboot the system.

**LDCM Administrator Setup:** Installs software to monitor PC systems on the network within the same bridge address with Local software installed. The installation of it is straight forward. First select *LDCM Administrator Setup* in the main menu, then all the way down to the end of the installation. Reboot the system. The administrator should install both Local and Administrator Software. (First install *Local Setup*, then install *Administrator Setup*.)

## Desktop Management Interface (DMI)

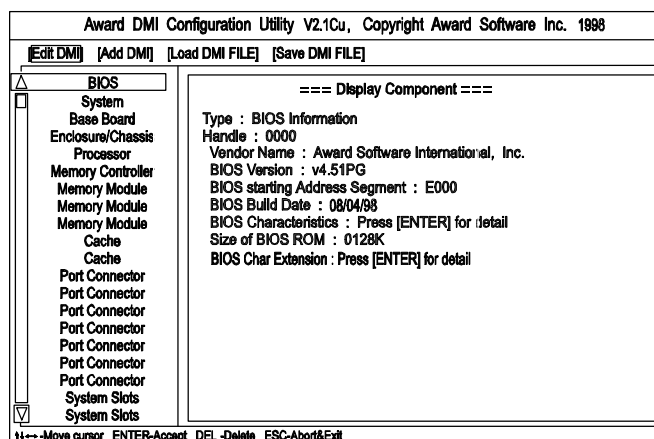
DMI (Desktop Management Interface) is a standard for organizing system configuration information. Using DMI, computer configuration can be made much simpler, quicker, and easier. Computer system configuration information can be read and modified from remote locations, permitting remote configuration and boot up.

## Starting DMI

1. Format a bootable MS DOS system disk, copy the DMICFG.EXE from the CD-ROM to the diskette.
2. Reboot the system by using this bootable system diskette to enter real mode.
3. After the DOS prompt, type *DMICFG* and press *Enter* key. The display below will appear on the monitor screen.

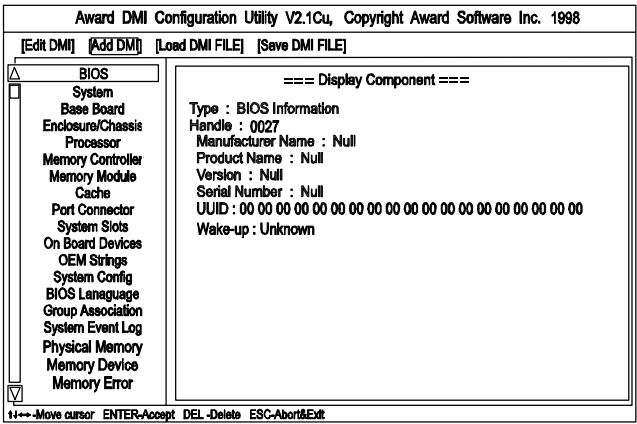
**NOTE:** Do not run this utility from Windows, it might cause the BIOS damage.

## Editing DMI

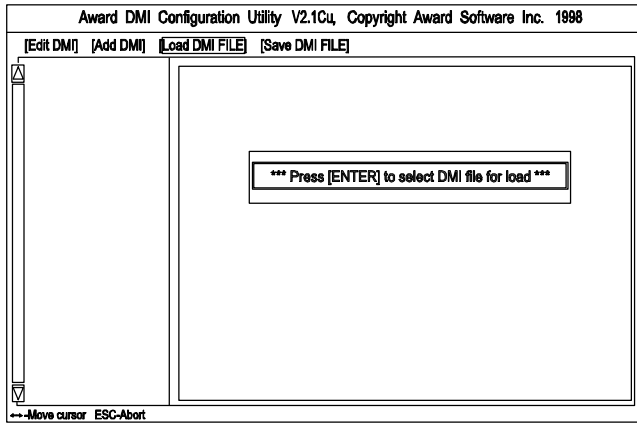


It provides record data about your computer system. The feature allows you to select editable DMI items by pressing arrow keys. The button *Press [ENTER] for detail* will pop up a sub menu. Use “+,-” keys to change configurations. Press *Esc* key to abort the configuration and exit. Press *Enter* key to save and exit. The screen field under *Show Only Component* means that the items are automatically detected by BIOS. The screen menu leading by *Edit Component* indicates the items under it are allowed to be changed by users.

Adding DMI



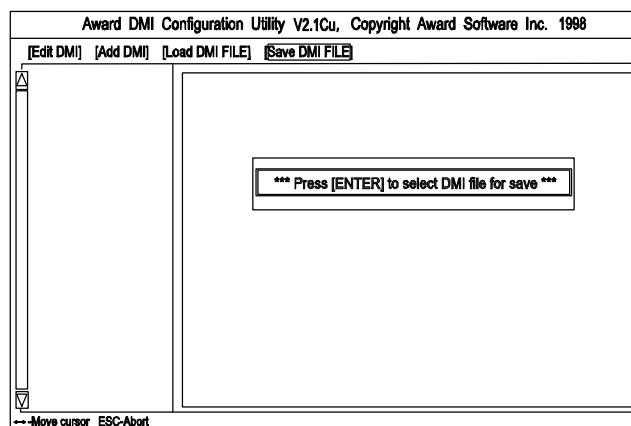
This menu allows users to add new information such as Manufacturer Name, Product Name.



Loading DMI

If users need the old DMI information, use this feature to load the DMI information.

## Saving DMI



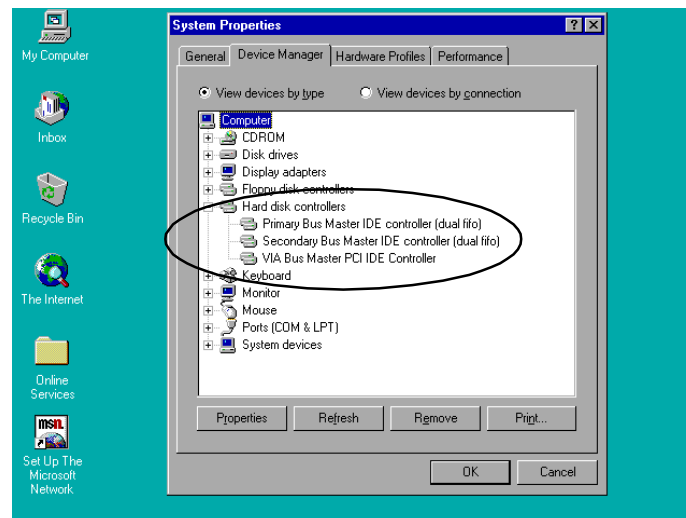
If users need to keep the DMI information that just changed, use this feature to save the DMI information.

If you exit DMI installation but cannot boot up (this case rarely occur), please ask local dealer to help you. (It might need another BIOS flash ROM chip.)

## Bus Master IDE Driver

The motherboard package provides VIA Bus Master IDE driver in the software utilities for Windows 95 and Windows NT to improve the system performance. Please read the relating README files first before install it.

This motherboard supports Ultra DMA/33, but Windows 95 does not recognize it. When the operating system detects the board and the Bus Master IDE driver not installed, information in the circle like the display below indicates the system will treat it as a standard dual PCI IDE controller. It cannot take advantage of the Ultra DMA. (The attached peripheral devices must support UDMA.)

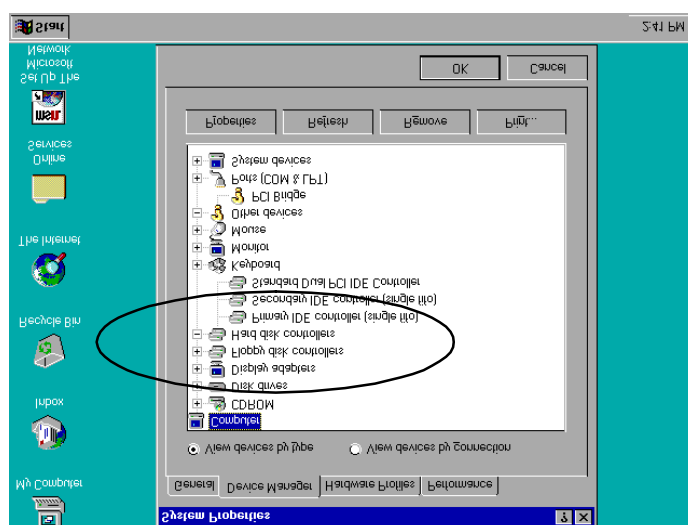


## Installation

The installation is straight forward by clicking on *IDE Bus Master* item of the main menu. There is no option to be selected while the installation procedure goes. After the installation, the system should be rebooted.

## Patch for Chipset

The motherboard package provides INF update file in the software utilities. Before you run the SETUP file, please read the relating README file first. This software is necessary for the operating system to recognize VIA Apollo MVP3 chipset implemented on this motherboard; otherwise, the question marks in the circle will appear in your Window 95 environment.



## Installation

The installation is straight forward by clicking on *Patch for Chipset* item of the main menu. There is no option to be selected while the installation procedure goes. After the installation, the system should be rebooted.

## AGP VxD Support Utility

The motherboard package provides AGP VxD support utility for VIA chipset-based motherboard. Before you start to install it, please read the relating README file first. **This software is necessary if you install an AGP VGA card.**

## System Requirements

The VIA VxD driver is **only supported by Windows 95 OSR 2.1 (4.00.950 B) or later version**.

### *For Windows 95 users -*

1. Run USBSUPP.EXE from Microsoft, which includes the USB supplement and a new memory manager (VMM32.VxD) needed for the AGP DIME (Direct Memory Execute) feature.
2. Run DirectX 5.0 from Microsoft.
3. Run AGP Master (i.e., AGP VGA) Driver from VGA Supplier.
4. Run the VGA card driver, VIAGART.VXD, a virtual device manager which usually will be installed in the following installation procedure of the Windows 95 card driver.
5. Exit the system.
6. Reboot the system.

### *For Windows NT users -*

VIA VxD will be supported when Windows NT 5.0 is released.

## Installation

Click on AGP VxD utility on the main menu and it will install the VIA VxD driver automatically onto your Windows 95 system.



## BIOS Flash Software

The board package provides BIOS flash software tool in the software utilities. This software feature is provided for upgrading BIOS use. To start the program, click on *Browse CD* in the main menu, select *Flash*, then choose the BIOS vendor that provided the BIOS this board came with. Please print the relating README file and read it first. For more information about, please visit FIC Web Site <http://www.fic.com.tw/>.

## Downloading BIOS File

Format a bootable system diskette by inserting an empty floppy disk into floppy disk drive and by typing **format a: /s**, visit the FIC Web Site <http://www.fic.com.tw/>. Please visit *BIOS Update* page in FIC's Technical Support section, then select the BIOS file you need. Download it to your bootable diskette.

## Upgrading BIOS File

Place the bootable diskette containing the BIOS file in the diskette drive (Assume the diskette drive is A.), and reboot the system by A drive. At the A: > prompt, execute the BIOS upgrading procedure by entering the Flash BIOS utility and the BIOS file with its extension. Backup the old BIOS file.

*Command: {flash tool file}{space}{downloaded BIOS file} / cc <Enter>*

Parameter **CC** stands for **Clear CMOS**. It is most frequently used. The other parameters are listed in *AWDFlash.txt* file or Type {flash tool file}/?, please read it if need.

After press *Enter* key, a FLASH MEMORY WRITER menu will appear. Enter the new BIOS file name with its extension file name into the text box after **File Name to Program**. If you want to save your old BIOS (this is recommend), select **Y** to **Do You Want To Save Bios**, then type the old BIOS name and the extension after **FILE NAME TO SAVE:**. Select **N** to **Do You Want To Save Bios**, if you do not want to save your old BIOS.

After the decision on saving the old BIOS or not (saving the old BIOS file is strongly recommended), select **Y** to **Are you sure to program** when the next menu appears; wait until a message shows **Message: Power Off or Reset the system**.

<b>WARNING:</b> Do not turn off or reset the computer during the flash process.
---

## Loading New BIOS Defaults

Once the BIOS has been flashed successfully,

1. remove the diskette and reboot the system.
2. Press *Delete* key to enter **CMOS SETUP UTILITY** menu while system booting-up.
3. Select **LOAD SETUP DEFAULTS** and load the new BIOS default values.

Finally execute **SAVE AND EXIT SETUP** to complete the whole process.

## Anti-Virus Tool

The motherboard package provides a virus scan tool, PC-cillin '95/97 Virus Scanner, for the Windows 95 environment. This tool allows you to perform virus scan and cure when it is necessary. Please read the relating README file first before installing the corresponding executable file.

## Hardware Requirements

PC-cillin '95 Virus Scanner is fully compliant with Windows 95.

**Minimum:** Intel P54C CPU (100MHz or above) with 8MB (or above) RAM.

The total disk space requirement to install PC-cillin '95 Virus Scanner is approximately 4.0 MB.

## Technical Notes

PC-cillin '95 Virus Scanner will be installed to the program group "PC-cillin '95 Virus Scanner" by default. The PCCWIN95.EXE command will be added to the Startup group, and the AUTOEXEC.BAT will be modified to add PCSCAN commands to fully protect your system from computer viruses at system boot up.