

Addendum (25-11607-30)

AN11 Updated Its Jumpers Orientations and Some Important Information about Optional RAID Features

The mainboard AN11 updated its jumper orientations and some information about the optional RAID features.

- 1). Page 1-1, the last paragraph: The mainboard owns 1ACR, 1AGP, and 5 PCI slots.
- 2). Page 1-2, the 1st paragraph: If RAID onboard, there are two ATA/100 cables in the package.
- 3). Page 1-4, the 4th paragraph: Athlon XP: 1500+ to 1900+ and up*
- 4). Page 2-3, the JP1_4G: The default setting is Enable.
- 5). If your board version is 1.4, the jumper orientation of ADV_EN is changed.



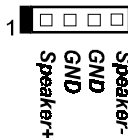
ADV Manual
Setting



ADV Auto
Setting
(Default)

- 6). The dual power LED and power LED (3-pin) pin definition were updated as arrowheads pointed:

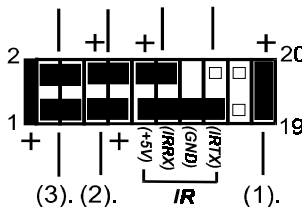
Speaker



PW_LED
(Power LED, 3 Pins)



(4). (5). (6). +5V



- | | |
|--|-------------------|
| (6). Suspend Button | (1). Power LED |
| (5). Power Button | (2). Reset Button |
| (4). Dual Power LED
(If use dual power LED,
green; Pin2, yellow; Pin4;
otherwise, Pin2 is positive,
Pin4 is negative.) | (3). HDD LED |

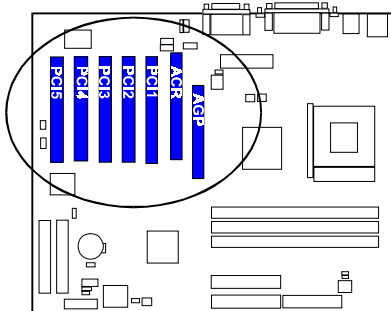
{Turn over to next page}

7). Some important information about PCI slot usages.



NOTE:

If RAID onboard, the PCI4 slot is not allowed for storage cards, such as SCSI cards, RAID cards; and the PCI5 slot is not allowed for PCI master cards.



8). Some important information about the optional RAID usages.

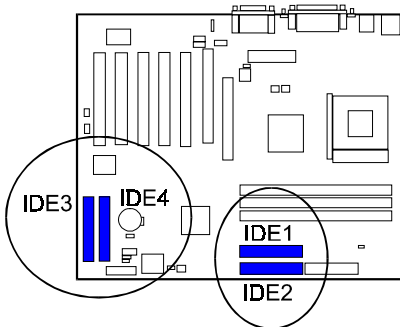
To use the optional RAID feature: (1). please set the jumper RAID_JP at RAID0/1; otherwise, it must stay at ATA100 (Default). (2). set up the RAID BIOS Utility while booting. (3). after operating system installed, set up the RAID software drivers. (if you use Windows 2000/XP, please copy the whole files in the subdirectory Promise/RAID into the floppy disks; then install the driver from the disks. If use ATA100 and Windows 2000/XP, please copy the whole files in the subdirectory Promise/ATA100 into the floppy disks; then install the driver from the disks.)



ATA100
(Default)



RAID 0/1 Enable



9). Page 2-14: BT1 connector was removed.
