

LSI LOGIC India Pvt Ltd
Vista Installation Steps for loading MegaIDE Driver

Author: KETAN MUKADAM

Issue:

MegaIDE.sys is not a Microsoft Certified Driver and hence has lower precedence than any other driver already existing in the Vista Installation DVD. The Intel's iastorV.sys driver identifies the ICH7R controller and hence takes precedence over the MegaIDE.sys during Vista setup.

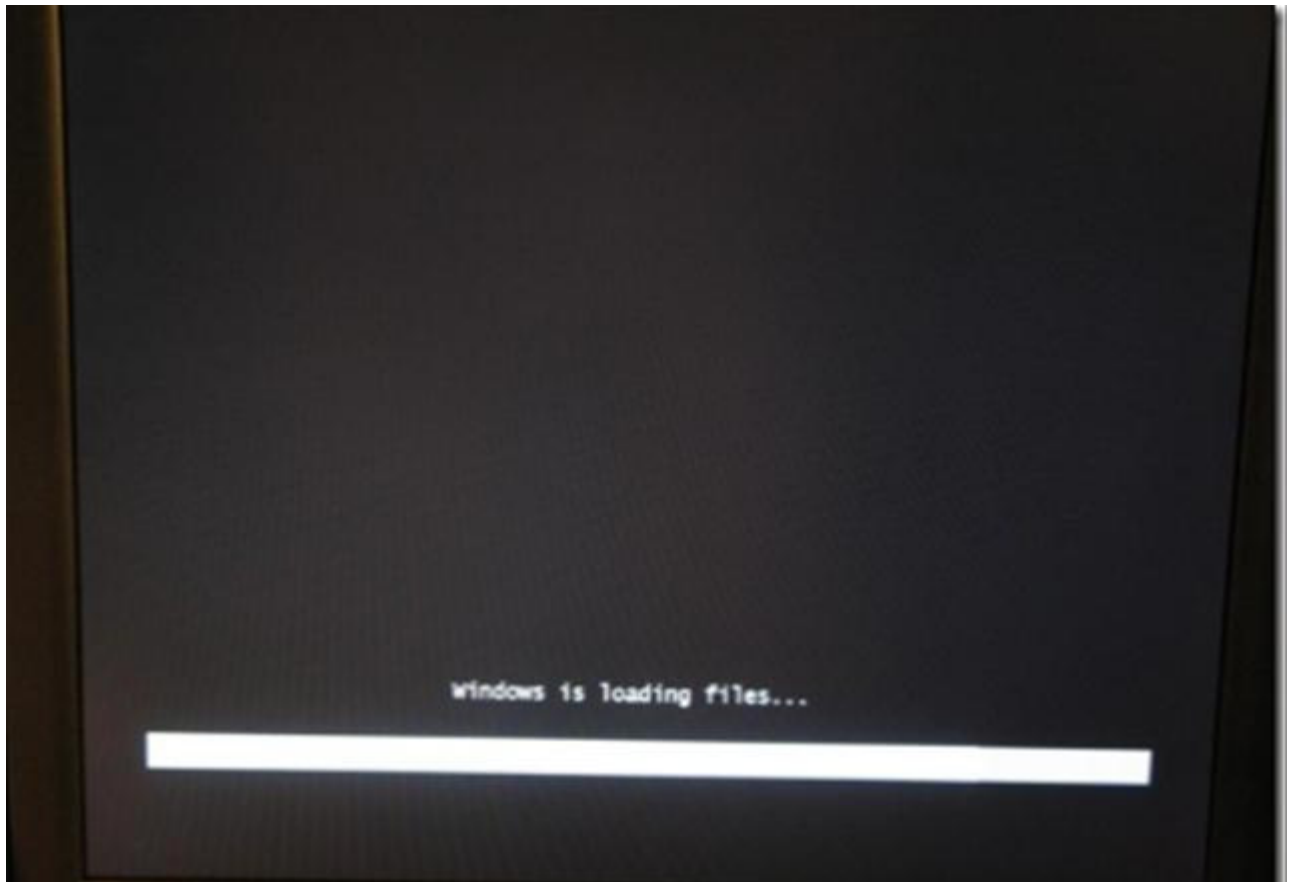
System Used:

FSC System with on-board ICH7R SATA controller
BIOS setting for the SATA controller set as "RAID"
One SATA hard drive attached and configured as RAID 0
Vista will be installed on this RAID 0

Workaround:

The following work-around can be used to install the MegaIDE.sys during vista set-up:

- 1) Make sure the RAID is configured and initialized before starting.
- 2) Insert the Vista DVD and boot from it

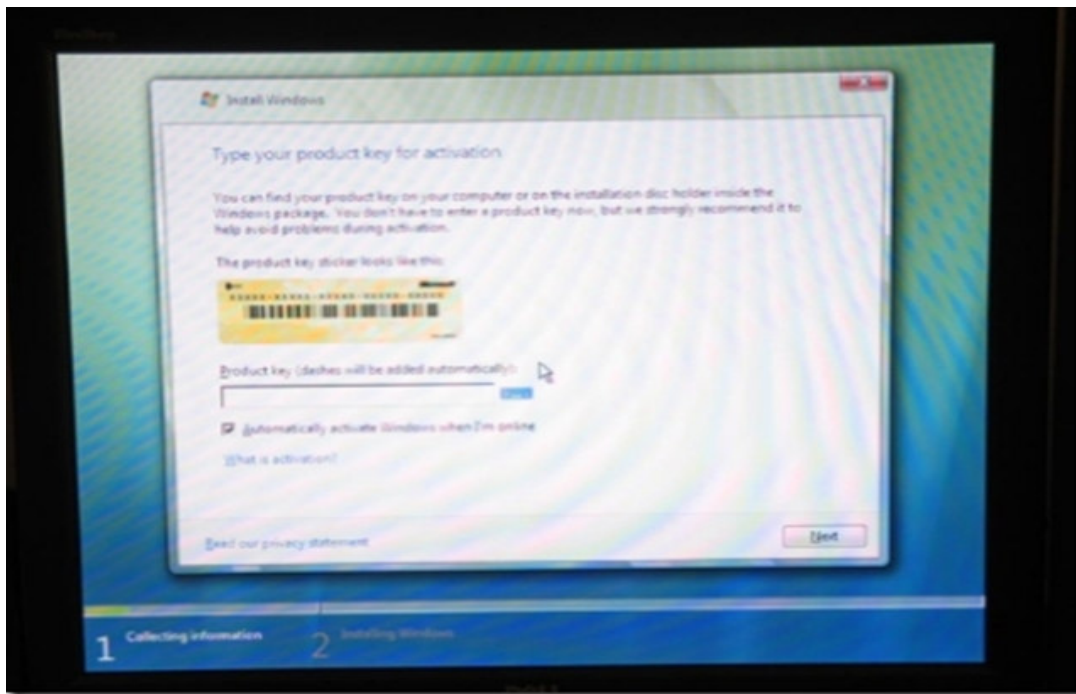


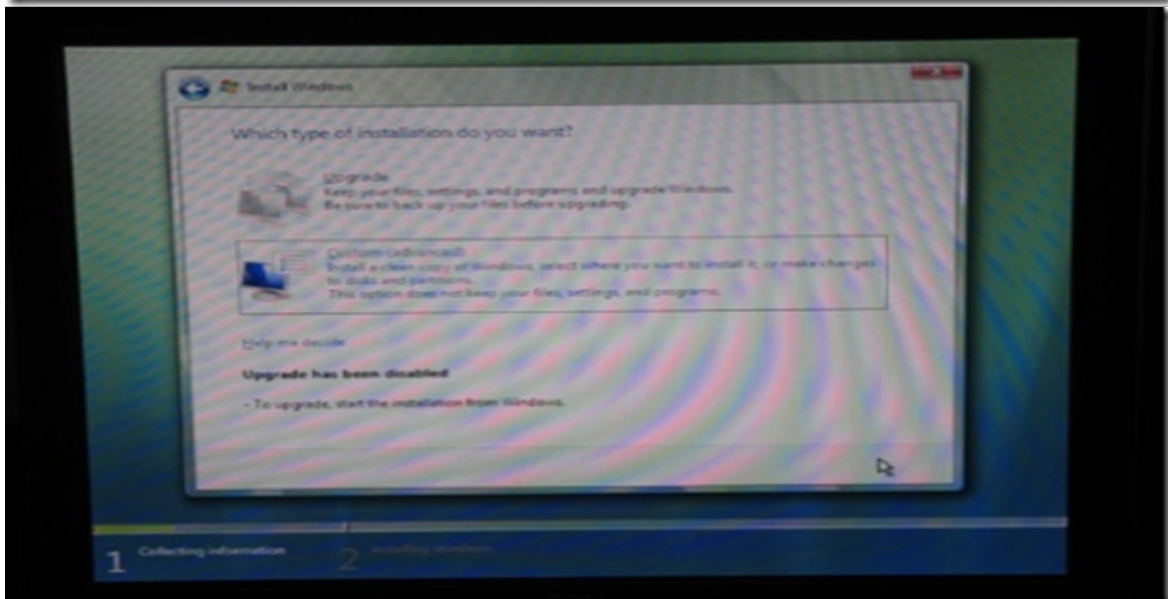
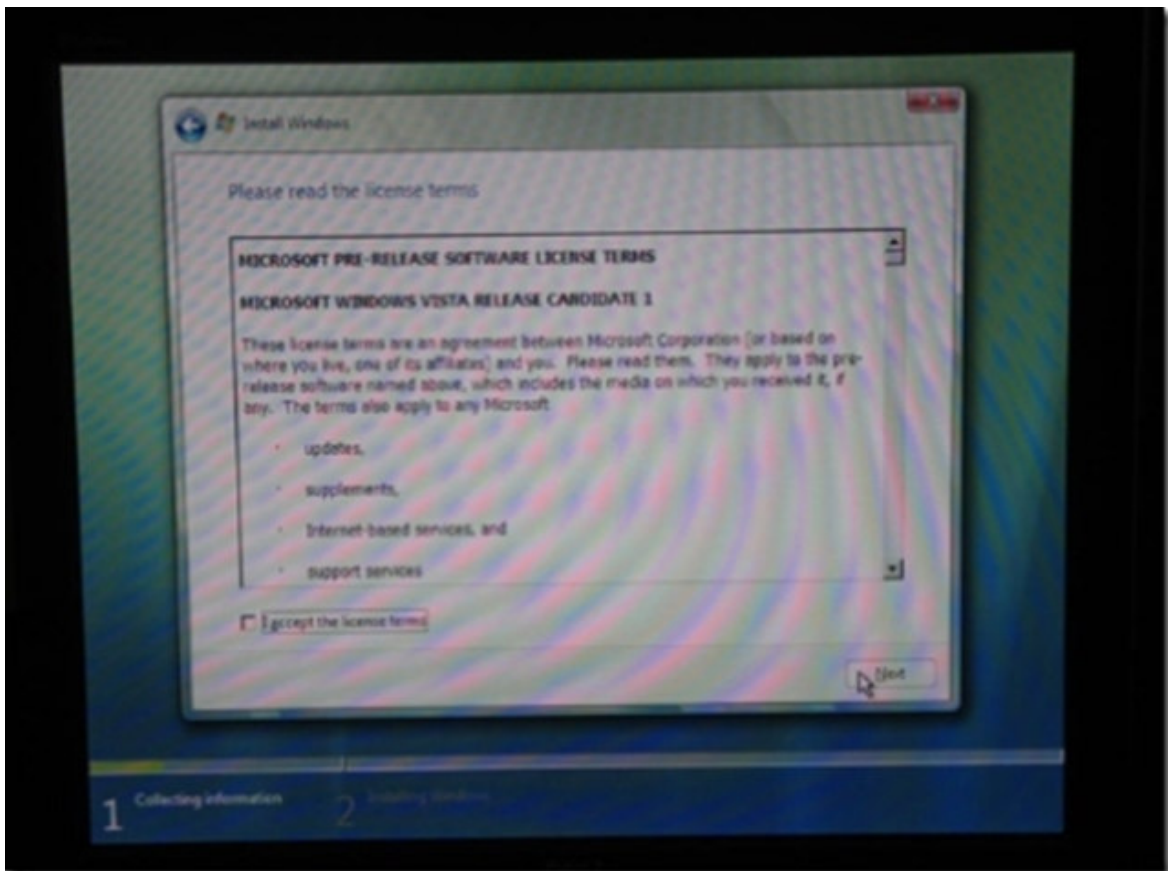
3) Follow the screen as shown



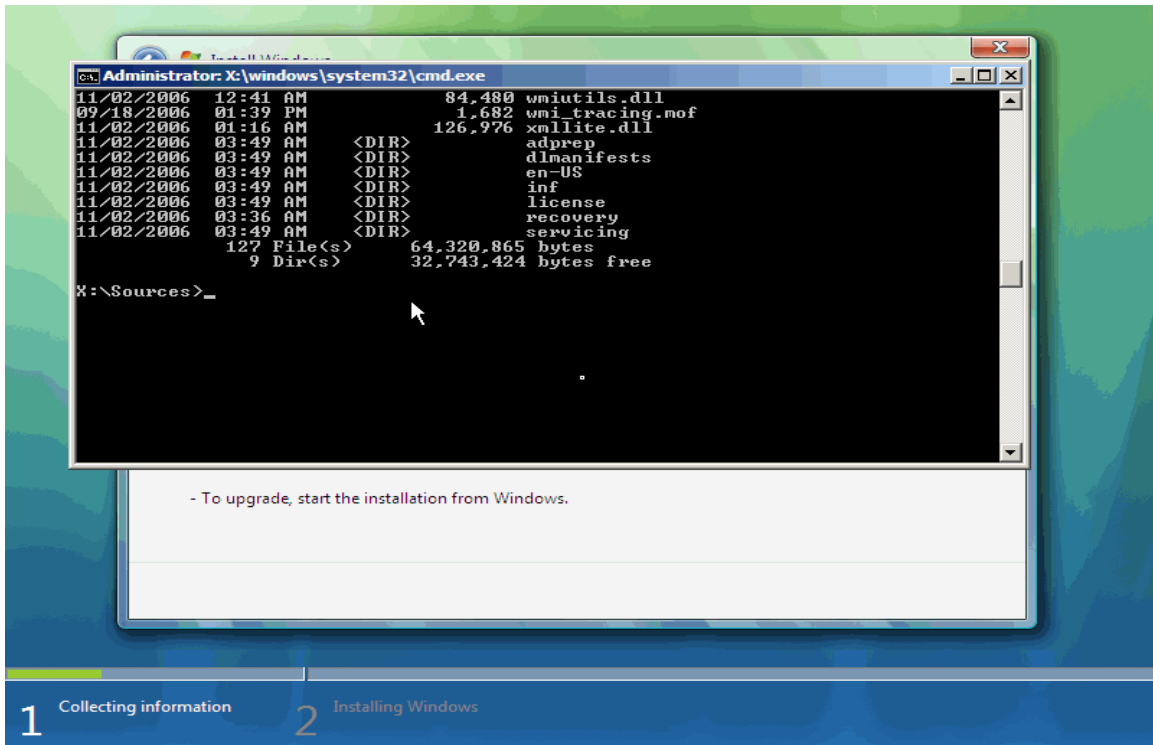


4) In case the DVD does not have a volume license, it might ask for the key

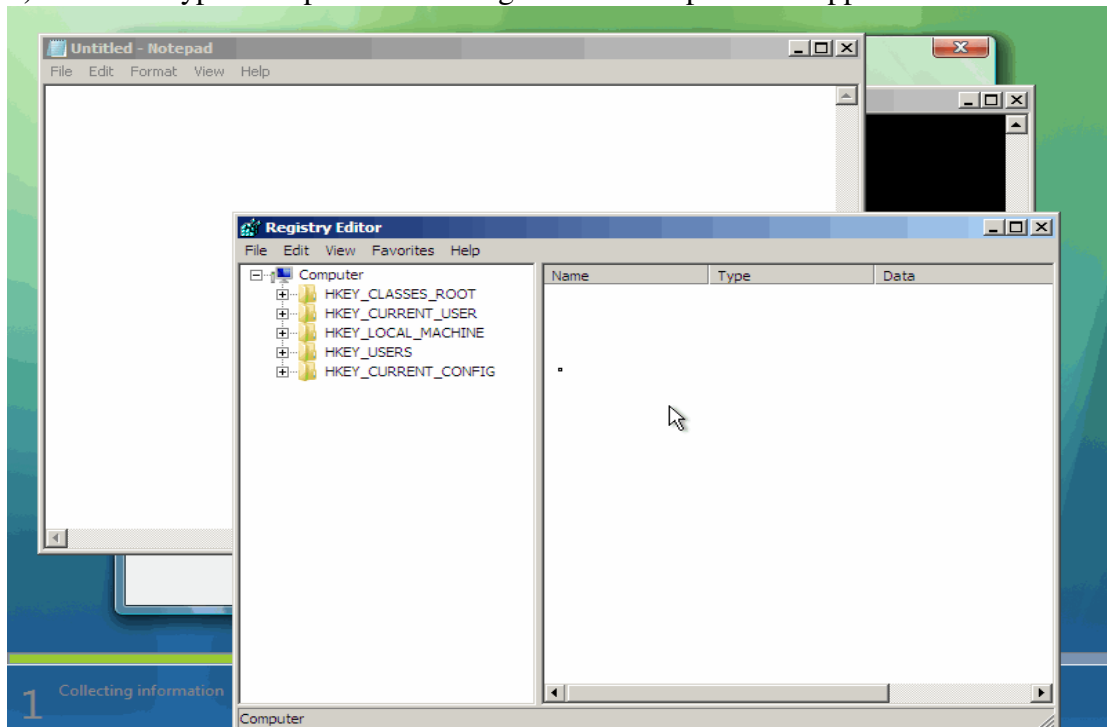




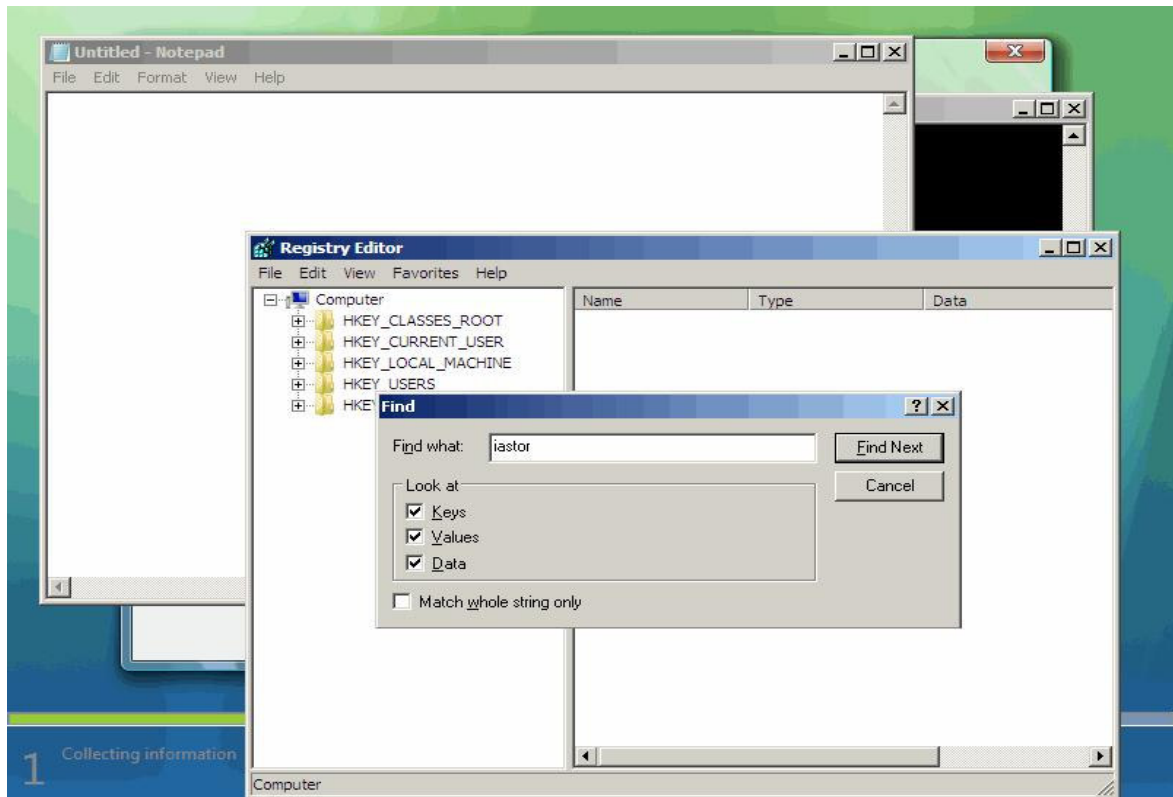
5) At this point press “Shift + F10”. A command prompt comes up.



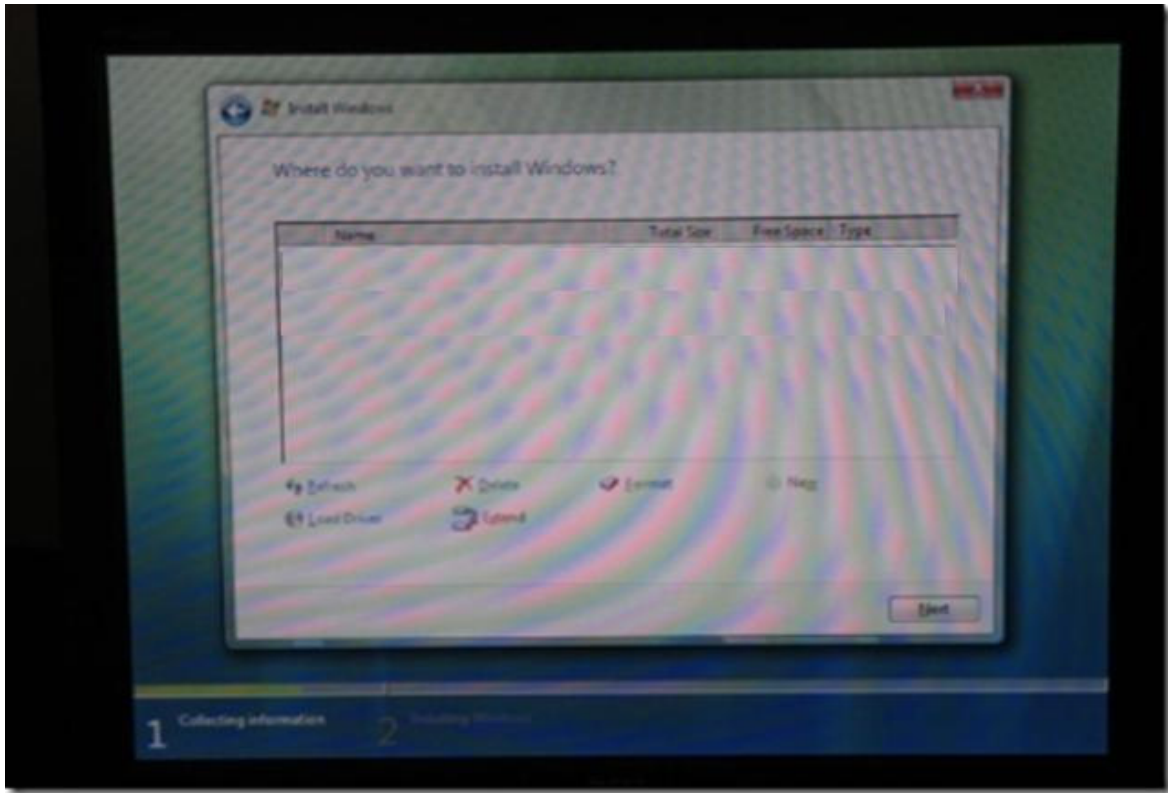
6) You can type “notepad.exe” or “regedit.exe” to open these applications as shown



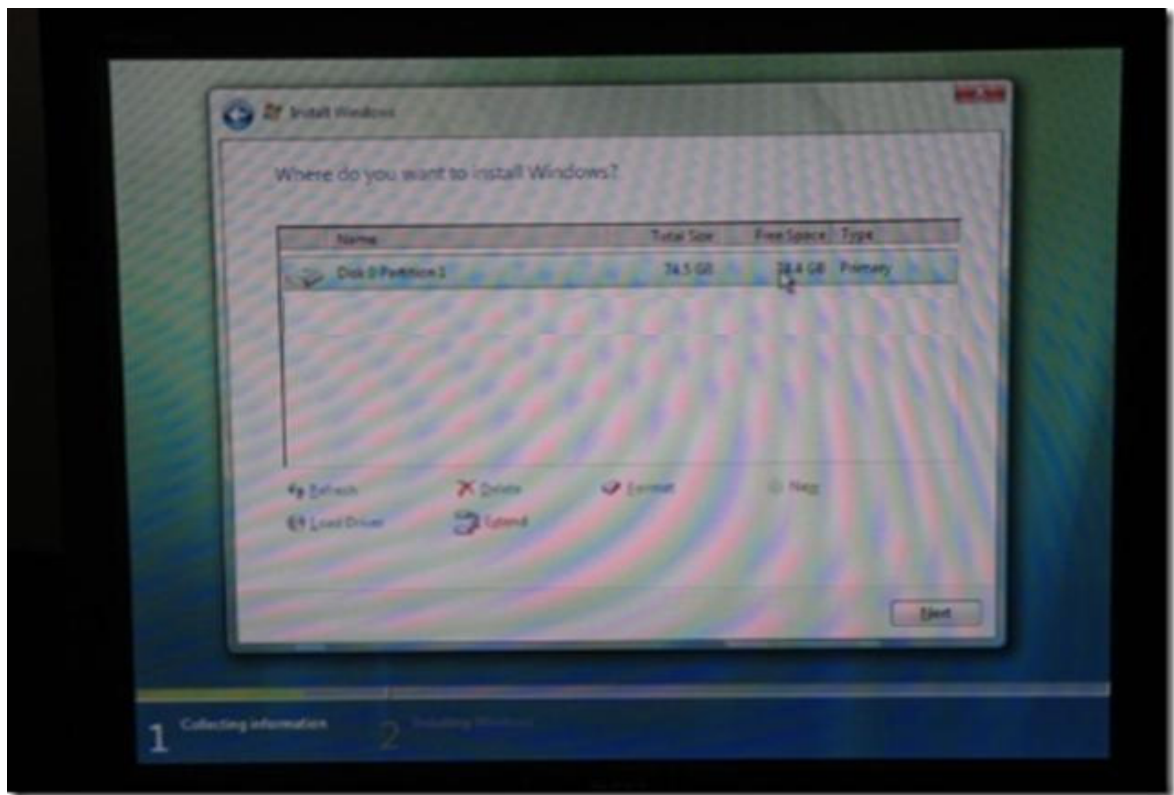
7) Open the regedit and search (Ctrl+F) for “iastor”



- 8) Delete all the entries with the name “iastor”. Even delete any keys which has iastor entries. Keep pressing “F3” to search for next entry.
- 9) Once all entries are deleted, then go to command prompt (Alt-Tab works) and delete the iastorV.sys from X:\windows\system32\drivers
- 10) Close all the open applications and proceed with installation
- 11) You should see a screen like this

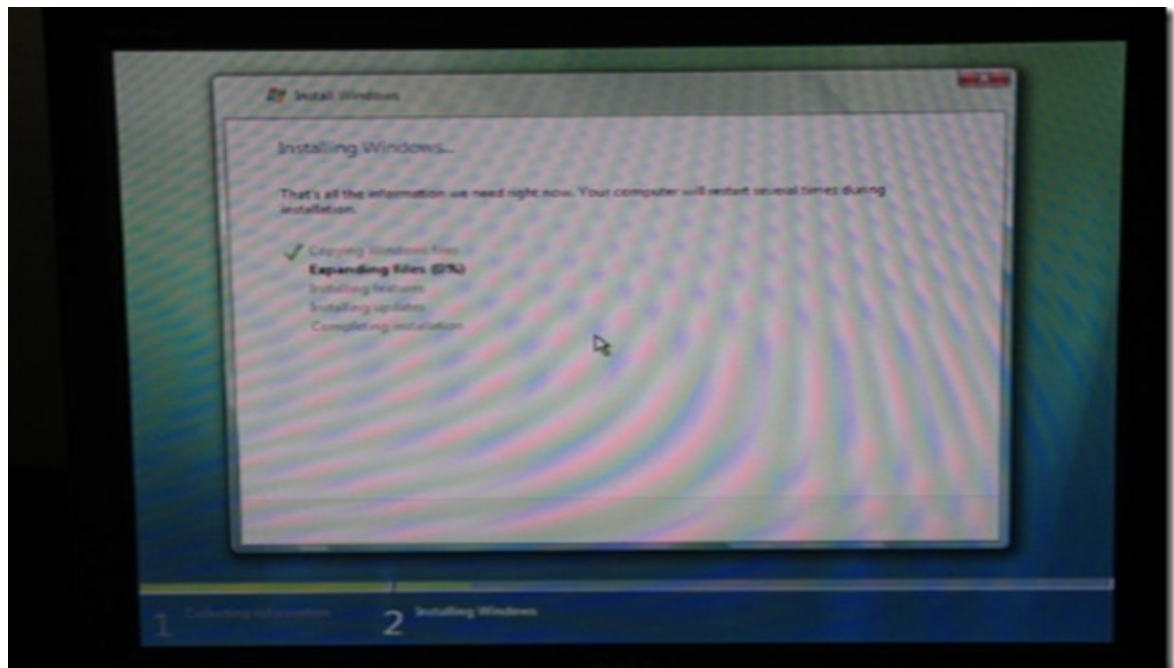


- 12) The above screen indicates that the drives are not detected since no suitable driver found. (This will only happen if no other hard-disk is present like an IDE or any other controller hard-disk or a USB drive)
- 13) The Vista DVD contains iastorV.sys which gets loaded (as seen through Windbg) but does not detect the drives as ours is a SW RAID.
- 14) Insert the USB driver containing the MegaIDE driver package. Click on “Load Drivers” and supply the appropriate INF path
- 15) Install the driver. If the driver is installed correctly the hard disk should be visible as shown

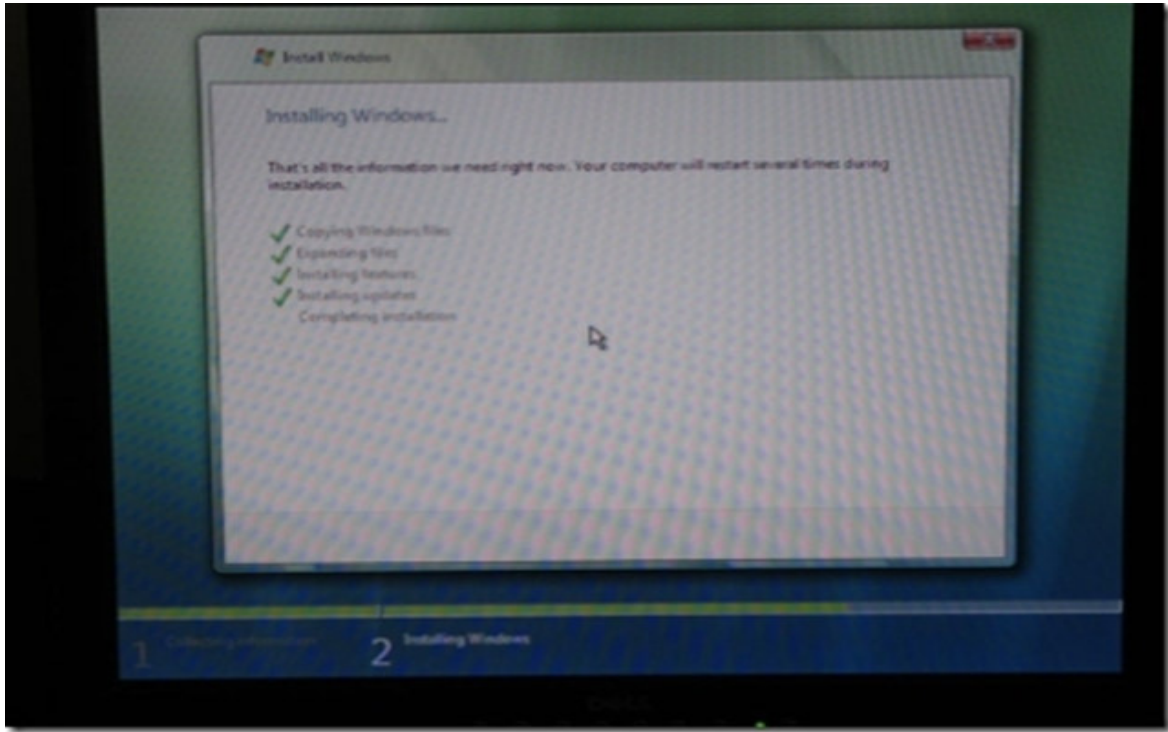


16) We just had RAID 0, so one LD found.

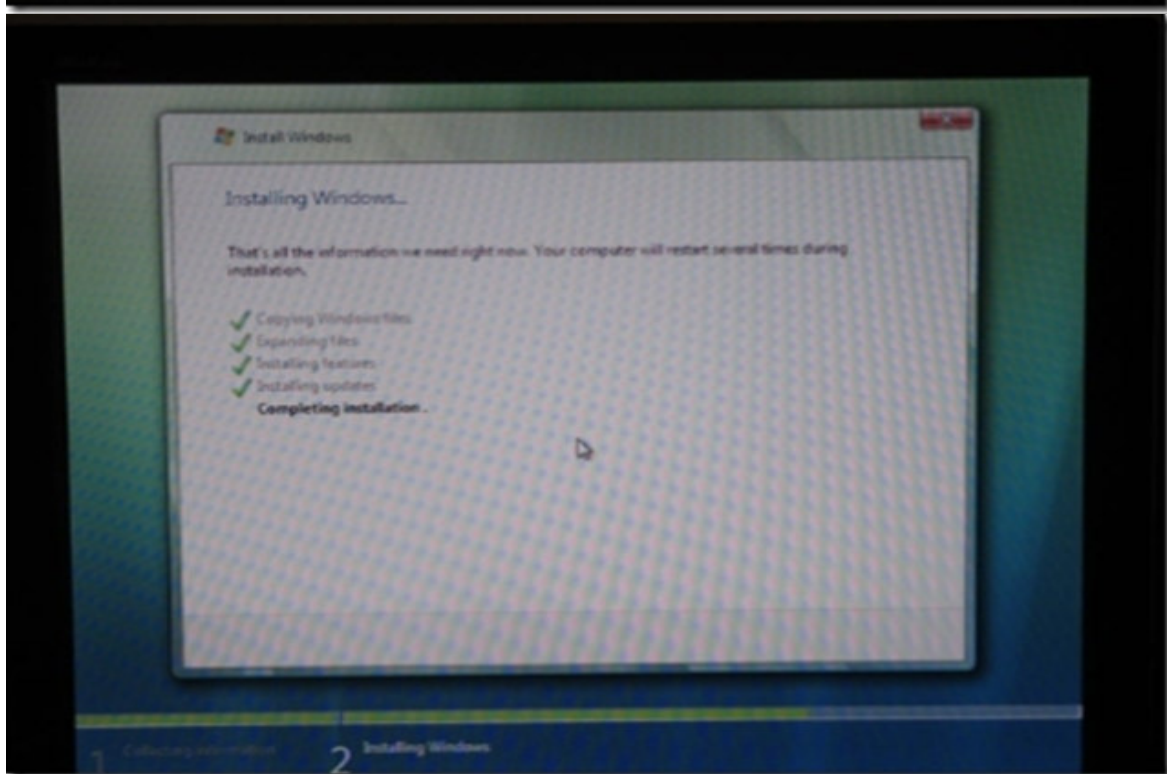
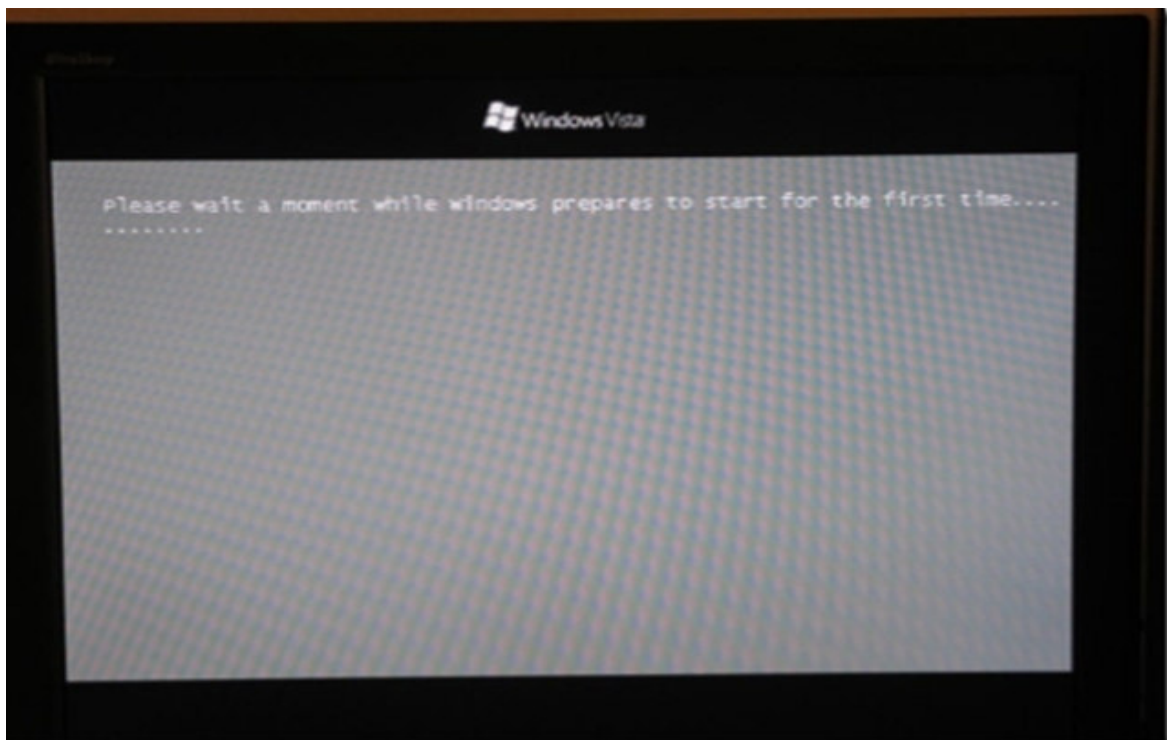
17) Start installing on that logical disk. You will see the screen. This step will take almost like 25-30 minutes (Expanding files takes the longest time)

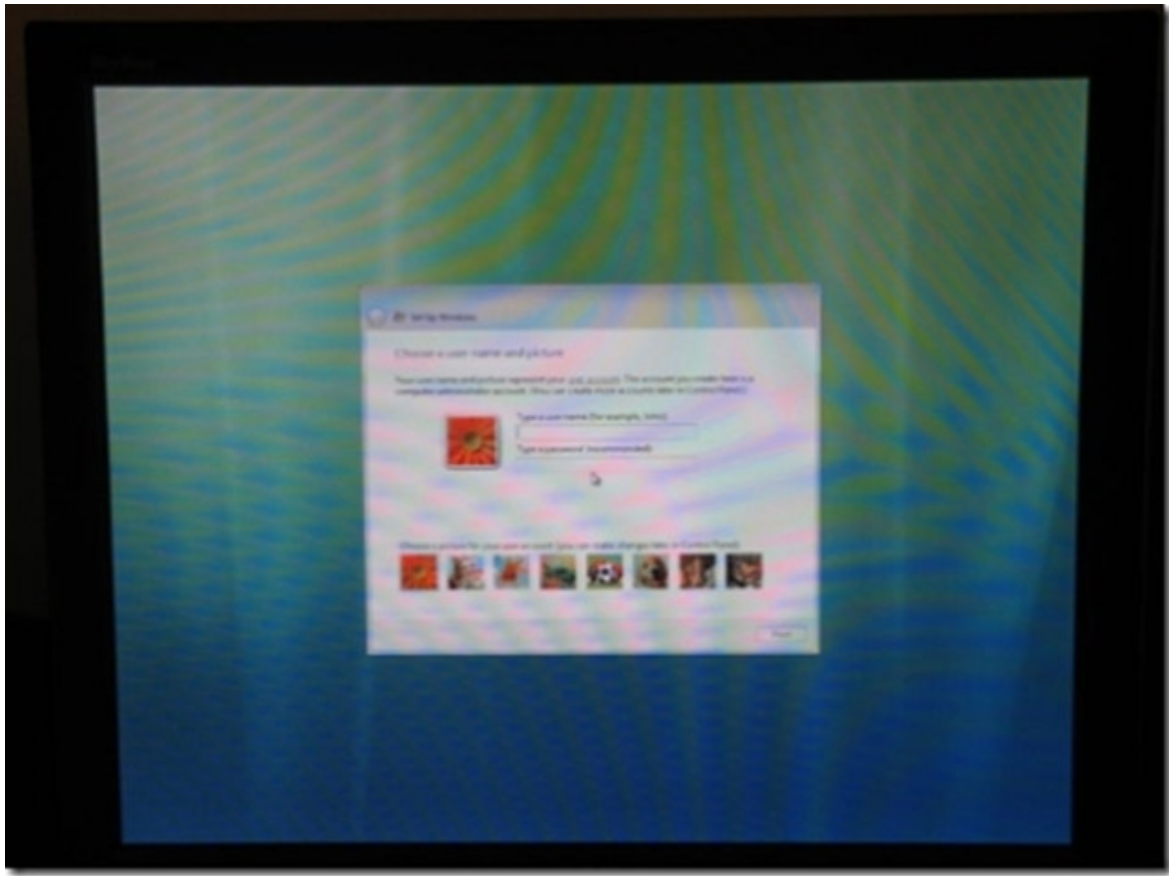


- 18) Just open the command prompt once more (Shift + F10) and delete any instance of C:\Windows\System32\drivers\iaastorV.sys.
- 19) Copy your MegaIDE.sys from USB flash to C:\Windows\System32\drivers\
- 20) Make sure you do steps 18 and 19, before vista tries to reboot.

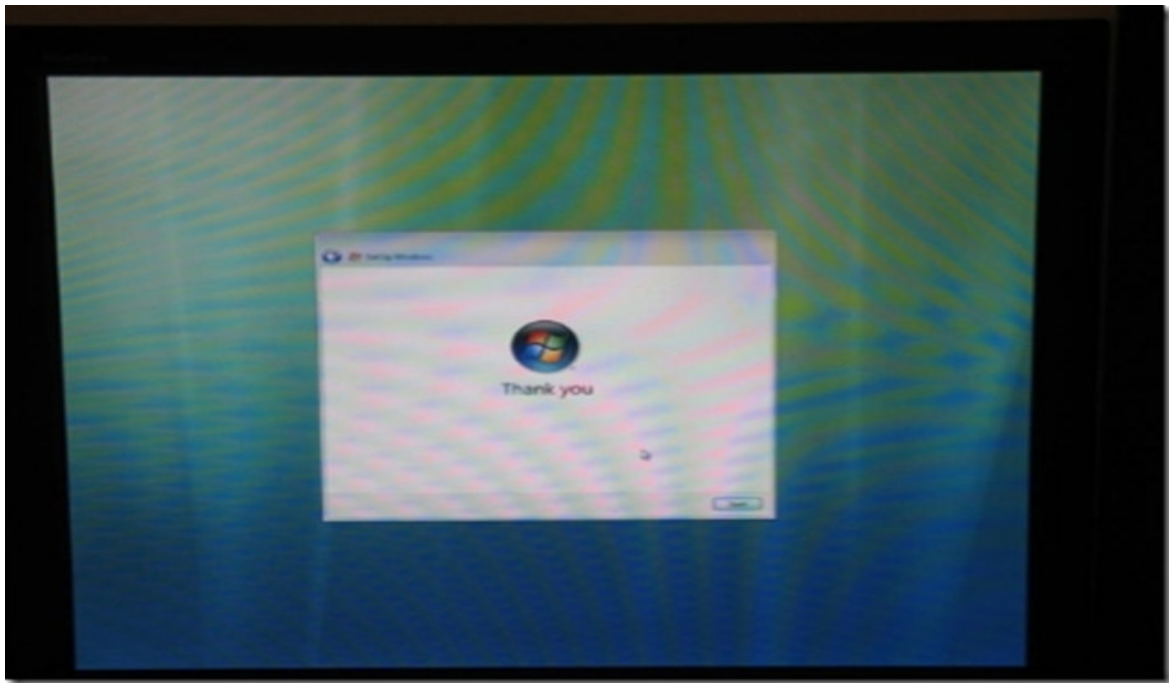


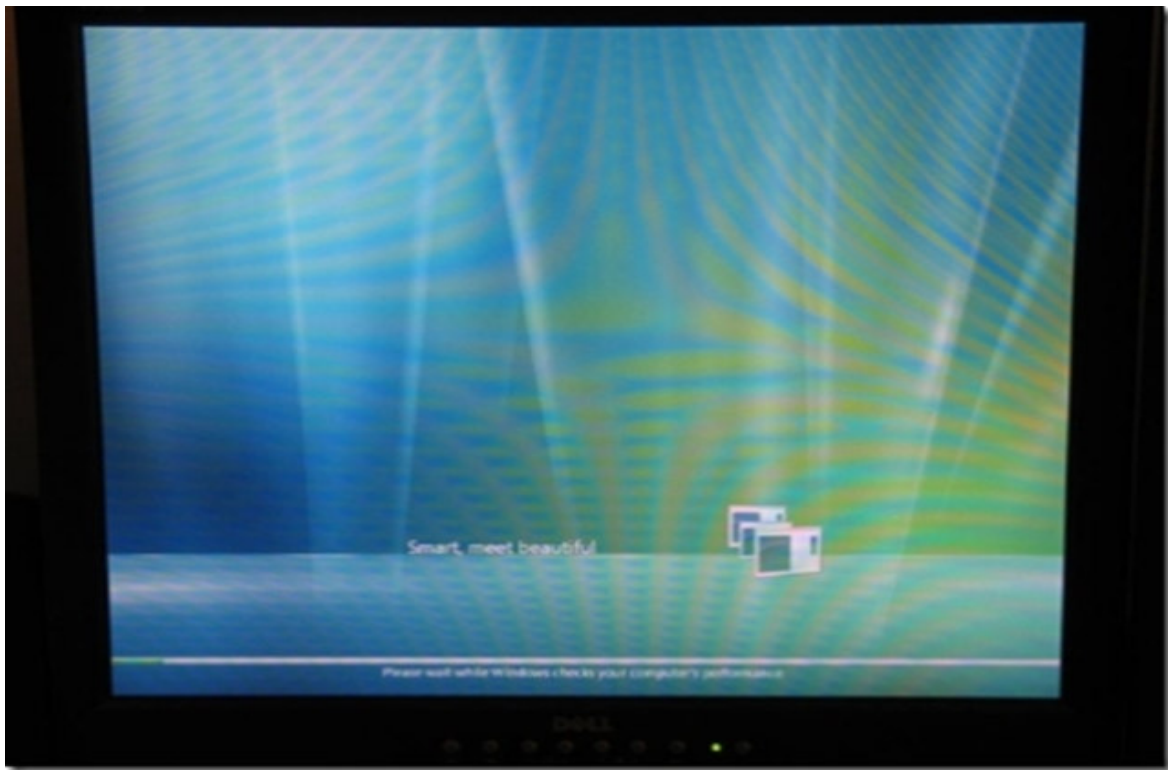
- 21) If the installation succeeds till this point, the system will reboot, remove the DVD and you should see the following screen



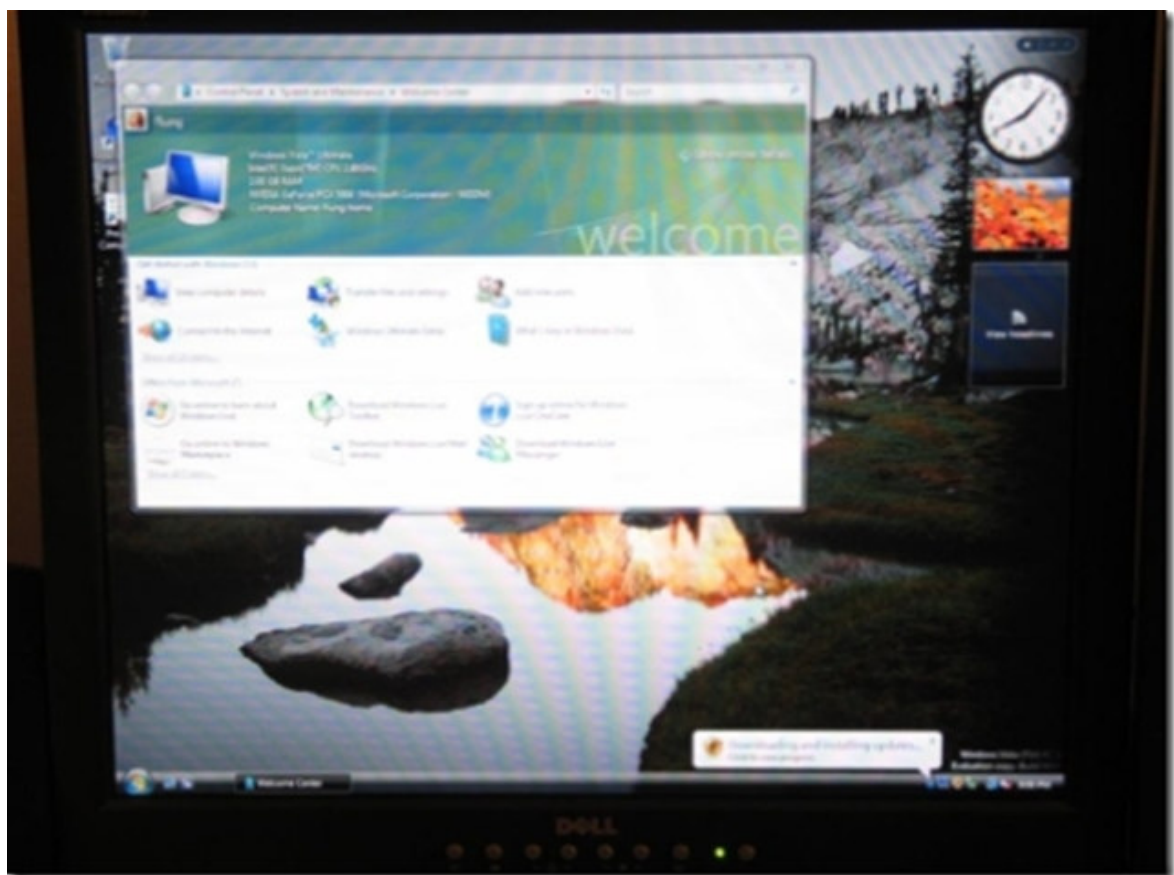


22) Proceed and you should see the screen





23) Vista is up and running



Filename: Vista_Installation_Step
Directory: C:\Documents and Settings\ketanm\Desktop
Template: C:\Documents and Settings\ketanm\Application
Data\Microsoft\Templates\Normal.dot
Title:
Subject:
Author: ketanm
Keywords:
Comments:
Creation Date: 3/12/2007 4:54:00 PM
Change Number: 42
Last Saved On: 3/12/2007 5:58:00 PM
Last Saved By: ketanm
Total Editing Time: 64 Minutes
Last Printed On: 3/12/2007 5:59:00 PM
As of Last Complete Printing
Number of Pages: 12
Number of Words: 561 (approx.)
Number of Characters: 3,201 (approx.)