

PC TV Cardbus

PCMCIA Type II TV/Video Capture card For Note Book

User's Manual

English

Deutsch

P/N:874-00060

1. Feature

1. Design for Global PAL/SECAM TV and NTSC TV
2. Switches your Notebook as a mobile TV set in Full Screen
3. Schedule Recording for TV
4. TV program Time-Shifting
5. Auto scan up to 125 TV Channels
6. TV Channel Fine Tune +/- 0.25 MHz
7. Favorite Channel List
8. Channel rename
9. Teletext
10. Max resolution up to 720x576 (PAL)
11. Windows free scale (up to Full screen)
12. Screen Capture
13. TV record in MPEG 4/2/1
14. Video input and record MPEG 4/2/1
15. Include Remote Controller
16. Listen to FM Radio
17. TV Stereo

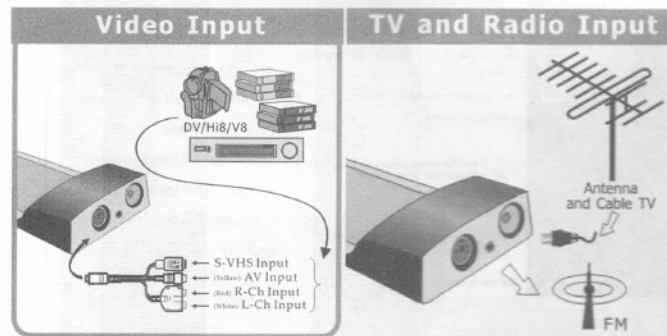
2. System Requirements

- Intel Pentium III 900MHz or higher and compatible computer
- A free PCMCIA Bus
- SVGA support higher than 640x480 / Hi-color
- Sound Card support for audio mix functions
- Cable / VHF / UHF antenna
- Windows 2000/XP
- DirectX Version 9.0 or higher

3. Package Contents

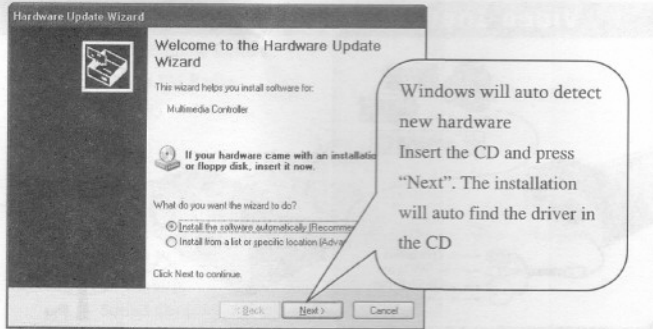
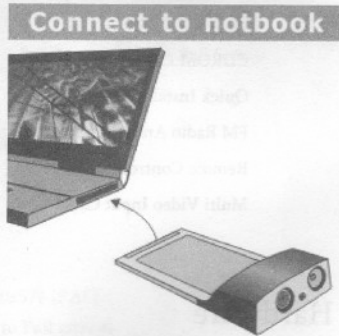
PC TV Cardbus	x1
CDROM Driver	x1
Quick Installation guide	x1
FM Radio Antenna	x1
Remote Controller + Battery	x1
Multi Video Input Cable	x1

4. Hardware



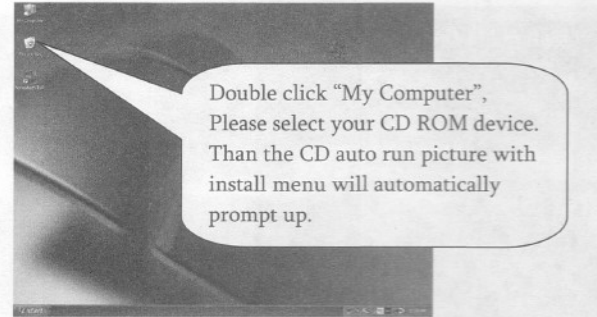
5. Installation

1. Insert the Cardbus TV into PCMCIA bus of Note Book.
2. Computer will automatically find the Hardware.
3. Please insert the Install CD, Computer will show the Autorun Picture on the screen.

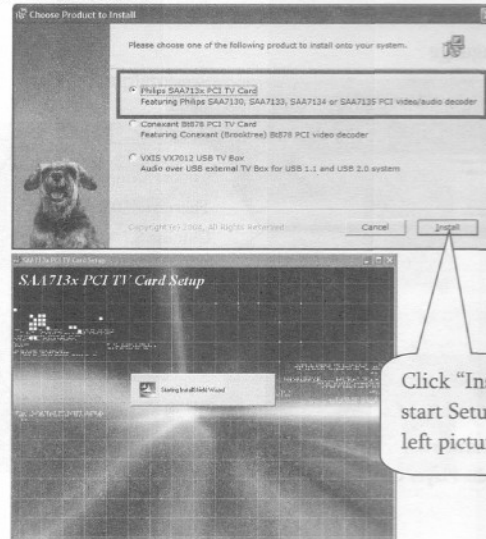


Follow the instruction to finish driver installation.

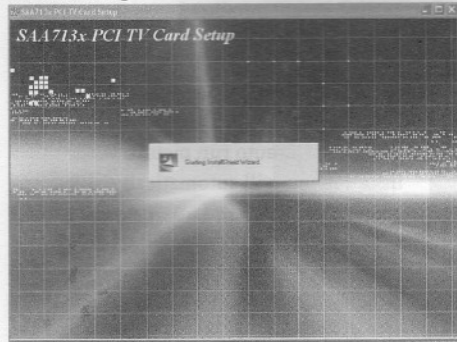
4. Find install menu in the CD.



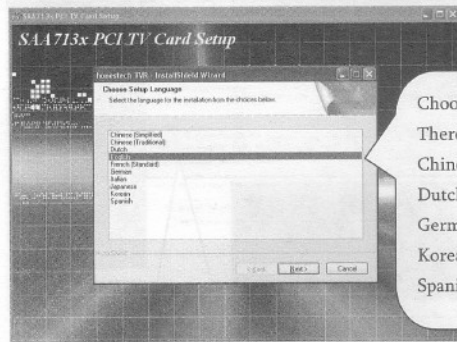
5. Install Menu



6. Installing



7. Choose language

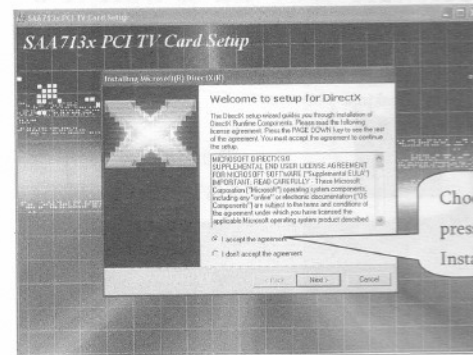


Choose Language
There are 10 languages:
Chinese S., Chinese T.,
Dutch, English, French,
Germany, Italian,
Korean, Japanese and
Spanish

Click next to continue.

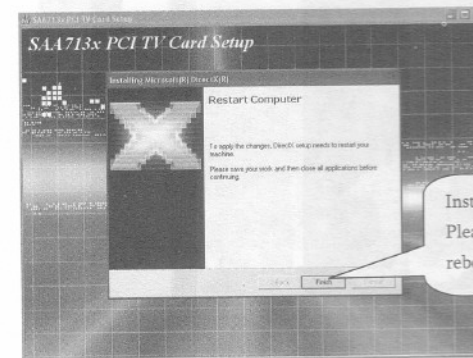
It will install Media Player Codec, Honestech Application.

8. Install DirectX



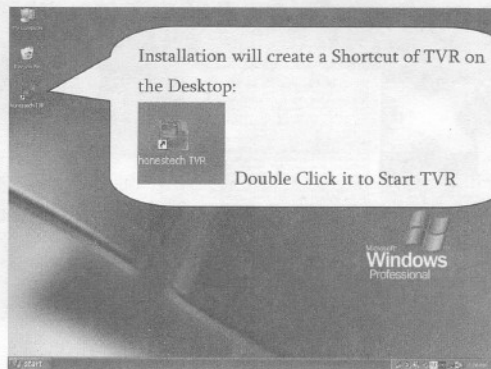
Choose "I agree" then
press Next to continue
Install

9. Install complete!



Install Complete!
Please click "Finish"
to reboot your PC.

6. Start the Software



TVR User interface:



6-1. How to use TVR



Input Source

Click here to switch
TV = Antenna;
Cable = Cable TV

Choose input source for TV/Composite/S-VHS/ FM (optional)



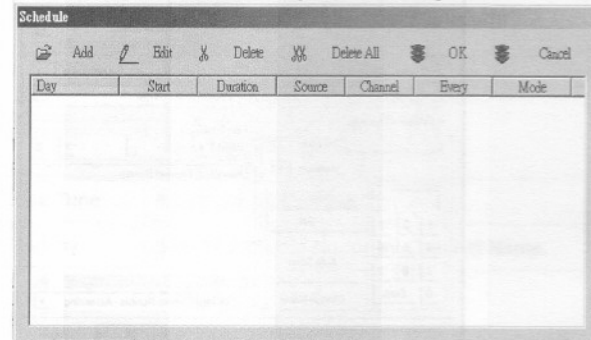
Channel Adjust

Click the arrow up or down to select channel.
Channel No. will show between the arrows.



Schedule Recording

Click this icon, will show a dialog box for setting schedule recording:

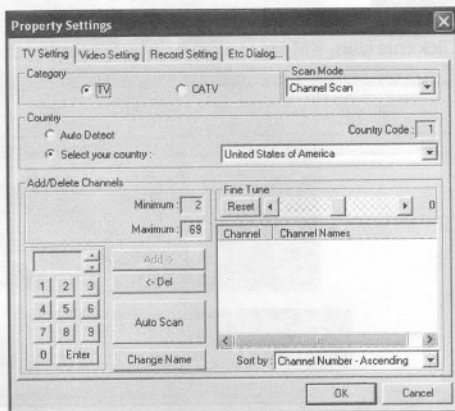


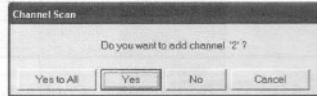
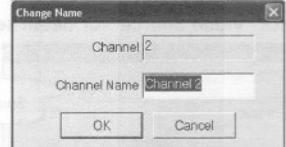
Description

Add	Set a new schedule for recording
Edit	Rename a recorded video file.
Delete	Delete the selected video file.
Delete All	Delete all video files from the list
OK	Confirm all setting and exit.
Cancel	Cancel all setting and exit

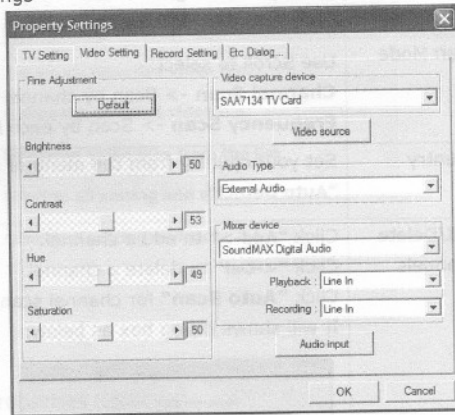
**Properties Settings**

Click this icon for detail settings:

a) TV Settings

Category	Setting TV signal from Antenna or Cable (TV=antenna; CATV=Cable)
Scan Mode	Use Scroll to select: Channel Scan -> Scan by channel Table Frequency Scan -> Scan by each Frequency
Country	Set your country from the menu or simply set on "Auto Detect"
Add/Delete Channels	Click "Add->" to add a channel. Click "<-Del" to delete a channel. Click "Auto Scan" for channel scan. It will shows dialog box as below:  Please click "Yes to All" to save all channels
Change Name	choose any channel and click to rename 
Fine Tune	Adjust single Channel
Sort by	Sort by Channel No. or by Channel Name.

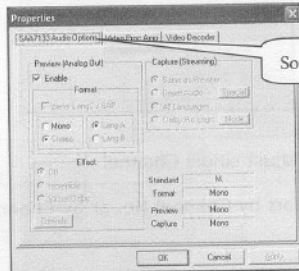
b) Video Settings



Fine Adjustment Setting Brightness, Contrast, Hue and Saturation; **"Default"** back to original setting.

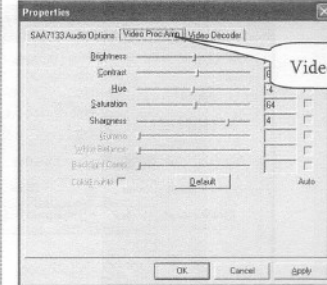
Video Capture Device Use the Scroll to select different Video Capturing Device.

Click **"Video Source"** for detail setting:



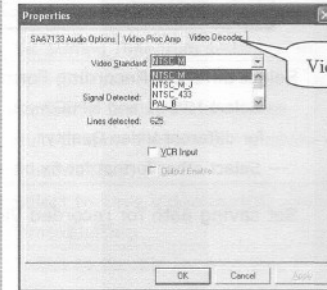
Source Setting

Preview: Disable for overlay mode.



Video Setting

Set Brightness, contrast, hue, saturation and sharpness. Press **"Default"** for original setting.



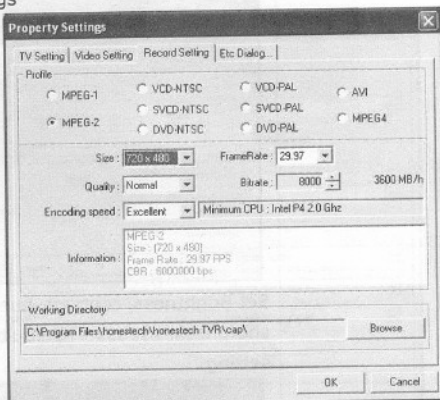
Video Decoder

Set TV Format

Mixer Device

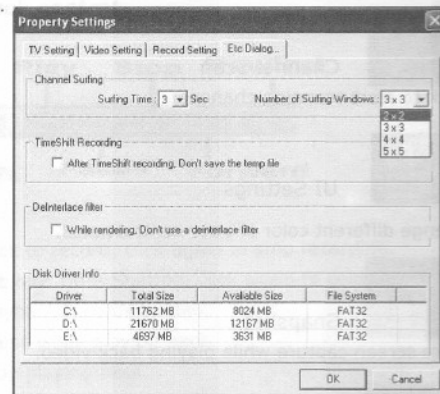
Select AC97 Audio for USB 2.0 TV/Capture
* if you select other device, might cause sound crash.

c) Record Settings



Profile	Select different Recording Format --- Select MPEG1 and MPEG2 you can set bit-rate for different Video Quality. --- Select other format for fix bit-rate
Working Directory	Set saving path for recorded Video

d) Etc Dialog ...



Channel surfing	Set Surfing Time from 1~10 sec. in Multi-Channel-Preview. Number of surfing Windows: set Multi-Channel-Preview at 4 windows (2x2) ~ 25 windows (5x5)
Time Shifting Recording	Select to save Video in HDD while activating Time-Shifting.
De-interlace Filter	Select to disable De-interlace Mode (Disable De-interlace will reduce Video Quality but will also reduce CPU Loading)
Disk Device Info	Show your HDD total Size and available Size. This info is only for your reference for you to set the length of recording Video.

**Channel Scan**

Click to start scanning channel.

**UI Settings**

Change different color of your control panel.

**Snapshot**

Make screen capture while playing back video.

**Multi-Channel Preview**

Click to open a window for channel preview. Please see **Page15** for Setting Surfing time and channels.

**Audio Setting**

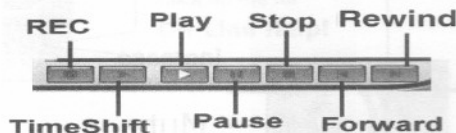
Click to select: Mono; Stereo; Main; Sap; Main+Sap.

**iEPG**

Click for internet Electronic Program Guide

**Teletext**

Click this button to start Teletext (See **Page 20** to operate)

Video playback control

REC	Click to record, click again to stop recording.
Time Shift	Activate Time-Shifting, click again to continue.
Play	Playback recorded video.
Pause	Pause while playing back.
Stop	Stop playing back.
Forward	Fast forward.
Rewind	Rewind

FM Control

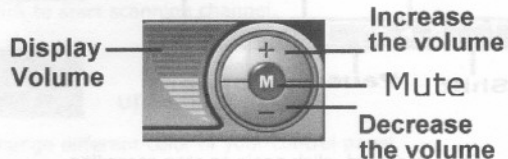
Click on me for **FM Radio**

Arrow Up for increasing Frequency.
Arrow Down for decreasing Frequency.
Center shows the current Frequency.

**** Tip!**

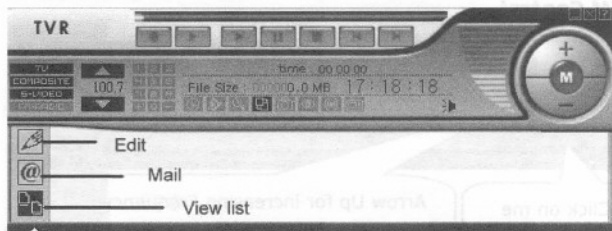
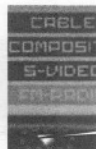
Use your No. pad of Keyboard to input Frequency and press "enter" to access the channel.

Volume control



Video Folder

Click to open record list as below. There are 3 functions.



Edit	Choose to edit what you have captured.
Mail	Choose to share your favorite picture or video with your friends.
View List	Show the list as small icon/big icon/details....

Help



Click on me for
On-Line Help!

Click to open online help file. There are further detail instructions to use the TV Plus software.

Mouse right click button

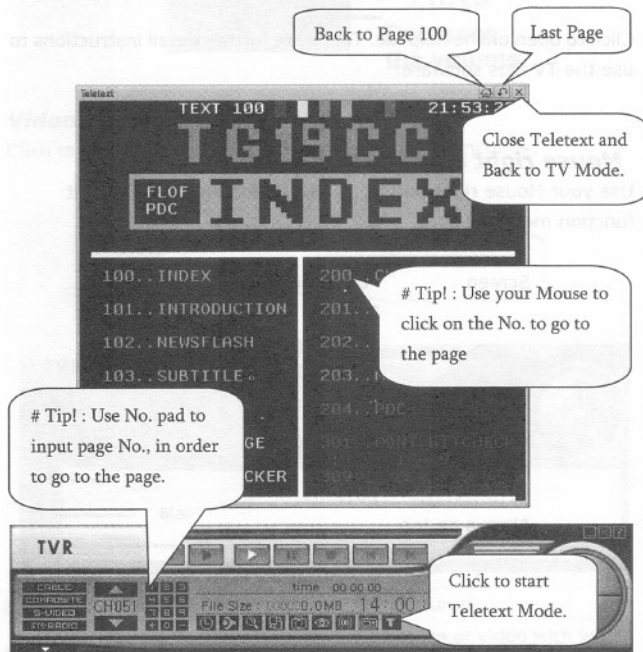
Use your Mouse right button on the TV screen to call instant function menu:

Screen	Full screen
	Normal
	Minimize
	320x240
	640x480
	720x480
Aspect Ratio	4:3
	16:9
Always on top	

6-2. How to use Teletext

9-1 Start Teletext

Teletext is a small program only for receiving Text data as a TV picture from TV Broadcaster. If TV Broadcaster does not send the data, then the Program will receive nothing.



In Teletext mode, all buttons on the UI will be disabled. You must close Teletext mode and go back to TV mode, then the button will be functional.

6-3. Remote Controller

